



New-Indy Catawba LLC
 P.O. Box 7
 5300 Cureton Ferry Road
 Catawba, SC 29704

Kevin Taylor
 Environmental Engineer
 Air Enforcement Branch
 Enforcement and Compliance Assurance Division
 US Environmental Protection Agency, Region 4
 61 Forsythe Street, SW
 Atlanta, GA 30303

January 17, 2025

Mr. Taylor:

I am submitting this report pursuant to Paragraph 2(b) of EPA's November 16, 2022, Consent Decree. Attached is a map indicating the locations of the three on-site monitors and a summary table of recent 7-day rolling average values. Also attached are the compiled 30-minute average values for both H₂S readings and meteorological data for each onsite monitoring station.

Paragraph 2(b)

The rolling 7-day averages for H₂S readings for this period are summarized as follows:

7-day Period		Onsite 7-day Avgs, ppb H ₂ S		
Period Start (EST)	Period End (EST)	Station 1	Station 2	Station 3
1/10/2025 00:00	1/16/2025 23:59	1.3	0.6	0.5

As required by the Order, New-Indy is continually evaluating its ongoing operations and shall continue developing response actions which include the following, among others:

1. New-Indy's environmental consultant continues to remotely monitor and evaluates each monitoring station's performance on a regular basis, daily checking and validating the precision checks for each station.
2. The mill continues to supplement the WWTP with peroxide and ferric chloride as discussed in previous reports.
3. New-Indy continues monitoring and optimizing mill processes to minimize organic and chemical losses to the sewer. The sustained reduction in daily H₂S levels and rolling averages continues to demonstrate New Indy's successful implementation of corrective actions.
4. The permanent activated carbon filtration unit continues to operate at the outfall structure (PAB, Post Aeration Basin) to potentially reduce variable ambient H₂S and VOC emissions.
5. SCDHEC has approved Trial requests from New Indy Catawba for the use of an industrial odor-reducing aerosol spray (not a masking agent, but an odor reducing agent) and oxygen injection into the primary clarifier influent.

Please let me know if you have questions.

Thank you.

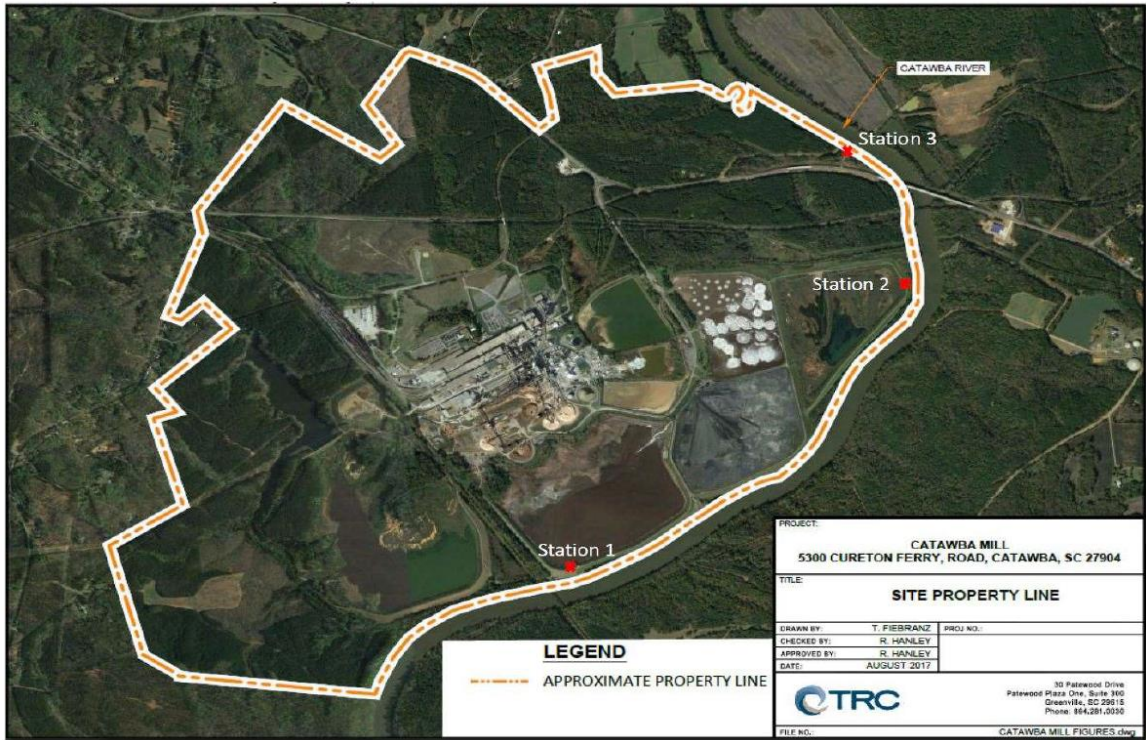
Glenn Rogers
 Environmental Manager

cc: Marirose J. Pratt
 Associate Regional Counsel
 Air & EPCRA Law Office
 US Environmental Protection Agency, Region 4
 Sam Nunn Atlanta Federal Center
 61 Forsythe Street, SW
 Atlanta, GA 30303

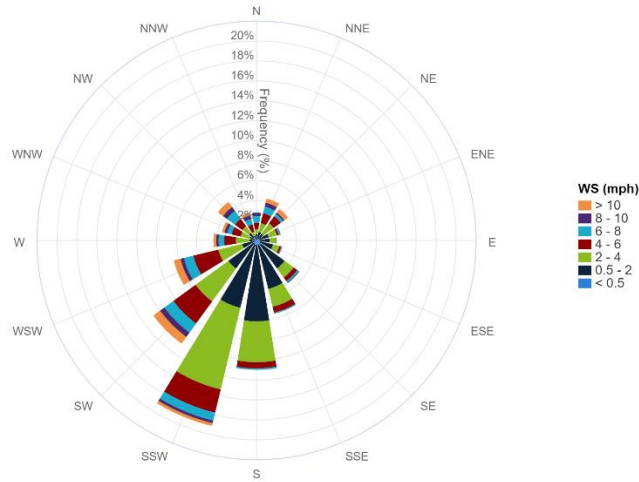
Attachments:

Monitor Location Map

7-day History (includes 24-hr daily averages, Wind Distribution data, 30-minute averages, and AQS Null Data codes)



7-Day Wind Rose Plot
 [From 1/10/2025 00:00 to 1/16/2025 23:59]



7-Day Period		Onsite 7-day Avgs, ppb H ₂ S			24hr Period	Onsite 24hr Avgs, ppb H ₂ S		
Period Start (EST)	Period End (EST)	Station 1	Station 2	Station 3	Calendar Day 00:00 – 24:00	Station 1	Station 2	Station 3
01/04/2025 00:00	01/10/2025 23:59	1.6	0.3	0.3	01/10/2025	1.5	0.2	0.3
01/05/2025 00:00	01/11/2025 23:59	1.7	0.3	0.3	01/11/2025	1.7	0.5	0.2
01/06/2025 00:00	01/12/2025 23:59	1.6	0.3	0.3	01/12/2025	1.3	0.3	0.3
01/07/2025 00:00	01/13/2025 23:59	1.4	0.3	0.3	01/13/2025	1.0	0.7	0.6
01/08/2025 00:00	01/14/2025 23:59	1.3	0.4	0.4	01/14/2025	0.9	0.6	0.8
01/09/2025 00:00	01/15/2025 23:59	1.2	0.4	0.4	01/15/2025	1.0	0.3	0.2
01/10/2025 00:00	01/16/2025 23:59	1.3	0.6	0.5	01/16/2025	1.4	1.8	1.0

30-Minute Avgs EST Ending @ Date / Time	Station 1			Station 2			Station 3		
	H2S	MET		H2S	MET		H2S	MET	
	ppb	WS - mph	WD - deg	ppb	WS - mph	WD - deg	ppb	WS - mph	WD - deg
1/17/2025 0:00	0.7	3.2	229	1.4	1.4	115	0.2	1.2	134
1/16/2025 23:30	0.7	3.9	198	0.8	1.4	199	0.2	1.1	154
1/16/2025 23:00	0.8	3.8	235	0.9	0.4	14	0.2	0.6	323
1/16/2025 22:30	0.8	3.1	242	1.8	0.6	35	0.2	0.5	17
1/16/2025 22:00	0.9	4.3	220	2.7	0.9	224	0.2	1.7	255
1/16/2025 21:30	0.8	5.7	227	2.1	0.6	231	0.2	1.7	247
1/16/2025 21:00	0.8	6.5	227	7.3	0.5	224	1.8	2.3	248
1/16/2025 20:30	0.8	4.8	213	4.3	0.3	218	4.3	1.7	191
1/16/2025 20:00	0.8	5.7	206	2.2	0.6	225	3.3	2.0	215
1/16/2025 19:30	0.8	4.8	201	0.9	0.2	218	3.7	1.7	205
1/16/2025 19:00	0.8	5.4	206	0.4	0.2	213	2.9	1.7	229
1/16/2025 18:30	0.8	4.4	202	1.9	0.3	214	2.7	2.0	217
1/16/2025 18:00	0.8	7.1	212	2.8	0.4	227	1.4	2.6	234
1/16/2025 17:30	0.8	6.2	215	0.9	1.0	233	0.2	2.8	240
1/16/2025 17:00	0.8	9.1	233	0.6	1.6	242	0.2	3.9	240
1/16/2025 16:30	0.7	9.5	238	1.2	2.1	247	0.4	4.3	244
1/16/2025 16:00	0.8	9.5	248	0.6	2.5	240	0.2	3.7	250
1/16/2025 15:30	0.9	9.1	230	0.7	2.9	237	0.5	4.6	243
1/16/2025 15:00	0.8	12.3	231	0.6	4.3	239	0.2	6.0	243
1/16/2025 14:30	0.8	11.7	239	1.3	3.8	242	0.4	5.0	239
1/16/2025 14:00	0.7	10.9	232	AX	2.6	242	0.4	5.4	237
1/16/2025 13:30	0.6	10.0	250	BA	3.0	250	0.2	2.8	252
1/16/2025 13:00	0.8	9.3	241	AN	3.0	249	0.2	4.2	244
1/16/2025 12:30	0.8	9.6	234	AN	2.9	244	0.6	4.2	243
1/16/2025 12:00	0.9	11.9	226	AN	2.8	239	0.2	4.0	243
1/16/2025 11:30	0.8	9.5	201	AN	3.3	237	0.9	4.5	240
1/16/2025 11:00	0.8	7.8	208	AN	3.7	226	1.1	4.1	206
1/16/2025 10:30	0.9	7.0	208	AN	2.7	229	1.6	3.3	209
1/16/2025 10:00	1.1	5.7	214	AN	3.3	237	1.4	3.1	199
1/16/2025 9:30	1.3	3.3	206	AN	2.9	238	2.5	2.1	180
1/16/2025 9:00	1.4	2.1	198	AN	0.6	258	4.1	1.8	172
1/16/2025 8:30	1.4	1.6	224	AN	1.1	243	3.3	1.2	160
1/16/2025 8:00	1.5	2.2	211	AN	1.0	191	1.4	0.5	82
1/16/2025 7:30	1.7	1.8	193	AN	0.6	195	2.0	0.4	101
1/16/2025 7:00	1.8	1.9	191	AN	0.6	184	0.9	0.3	234
1/16/2025 6:30	1.8	1.7	198	AN	1.3	207	0.9	0.3	307
1/16/2025 6:00	2.0	1.4	187	AN	0.5	12	0.4	0.2	2
1/16/2025 5:30	2.1	1.0	189	AN	1.3	60	0.2	0.3	2
1/16/2025 5:00	2.2	2.1	194	AN	0.5	293	0.2	0.3	310
1/16/2025 4:30	2.6	2.3	183	AN	0.6	7	0.2	0.3	184
1/16/2025 4:00	2.2	1.9	192	AN	0.9	355	0.2	0.3	246
1/16/2025 3:30	2.1	1.7	96	AN	0.9	21	0.2	0.6	64
1/16/2025 3:00	2.8	1.1	153	AN	2.0	33	0.2	0.4	347
1/16/2025 2:30	2.9	1.1	163	AN	1.3	359	0.2	0.3	47
1/16/2025 2:00	3.6	2.1	54	AN	2.6	34	0.2	0.6	9
1/16/2025 1:30	3.7	3.2	49	AN	3.5	43	AX	0.8	15
1/16/2025 1:00	3.7	2.9	53	AN	3.9	36	0.2	1.0	3
1/16/2025 0:30	AX	1.4	107	AN	2.0	29	0.2	0.5	359

30-Minute Avgs EST Ending @ Date / Time	Station 1			Station 2			Station 3		
	H2S	MET		H2S	MET		H2S	MET	
	ppb	WS - mph	WD - deg	ppb	WS - mph	WD - deg	ppb	WS - mph	WD - deg
1/16/2025 0:00	3.7	3.5	47	AN	1.4	37	0.2	0.9	1
1/15/2025 23:30	0.7	0.6	172	AN	1.4	55	0.2	0.9	34
1/15/2025 23:00	0.7	2.2	194	AN	0.4	83	0.2	0.4	276
1/15/2025 22:30	0.7	0.9	163	AN	0.6	45	0.2	0.5	333
1/15/2025 22:00	0.7	1.9	198	AN	0.9	42	0.2	0.6	305
1/15/2025 21:30	0.8	0.9	188	AN	0.6	26	0.2	0.3	315
1/15/2025 21:00	0.7	2.0	199	AN	0.5	320	0.4	0.3	306
1/15/2025 20:30	0.7	1.1	175	AN	0.3	23	0.2	0.3	276
1/15/2025 20:00	0.7	1.2	183	AN	0.6	4	0.2	0.3	58
1/15/2025 19:30	0.7	2.1	201	AN	0.2	299	0.2	0.2	115
1/15/2025 19:00	0.7	1.8	200	AN	0.2	62	0.2	0.3	80
1/15/2025 18:30	0.6	2.1	194	AN	0.3	81	0.2	0.3	115
1/15/2025 18:00	0.5	2.1	160	AN	0.4	68	0.6	0.3	122
1/15/2025 17:30	0.5	1.6	106	0.2	1.0	73	0.4	0.5	218
1/15/2025 17:00	0.5	1.1	172	0.2	1.6	7	0.2	0.5	219
1/15/2025 16:30	0.5	2.0	211	0.2	2.1	25	0.2	1.7	1
1/15/2025 16:00	0.5	3.3	332	0.2	2.5	307	0.2	1.7	351
1/15/2025 15:30	0.6	3.0	331	0.2	2.9	357	0.2	2.3	19
1/15/2025 15:00	0.6	4.8	310	0.2	4.3	308	0.2	1.8	342
1/15/2025 14:30	0.8	5.3	14	0.2	3.8	331	0.2	2.8	358
1/15/2025 14:00	0.9	3.3	28	0.2	2.6	6	0.2	2.1	29
1/15/2025 13:30	0.9	1.8	24	0.2	3.0	23	0.2	2.6	30
1/15/2025 13:00	0.8	4.7	43	0.2	3.0	286	0.2	1.9	354
1/15/2025 12:30	0.7	4.6	41	0.2	2.9	302	0.2	2.1	3
1/15/2025 12:00	0.7	5.7	61	0.2	2.8	44	0.2	2.8	31
1/15/2025 11:30	0.9	6.7	45	0.2	3.3	79	0.2	3.7	39
1/15/2025 11:00	0.8	7.3	48	0.2	3.7	43	0.2	4.1	34
1/15/2025 10:30	1.5	10.7	35	0.2	2.7	52	0.2	4.0	24
1/15/2025 10:00	1.6	13.5	37	0.2	3.3	49	0.2	4.7	33
1/15/2025 9:30	2.4	12.5	30	0.2	2.9	39	0.2	4.6	29
1/15/2025 9:00	3.1	7.0	31	0.2	0.6	60	0.2	2.0	12
1/15/2025 8:30	1.8	4.3	54	0.2	1.1	48	0.2	1.0	34
1/15/2025 8:00	1.3	2.0	213	0.2	1.0	33	0.2	0.7	10
1/15/2025 7:30	1.2	1.7	191	0.2	0.6	3	0.2	0.6	305
1/15/2025 7:00	0.9	1.5	149	0.2	0.6	25	0.2	0.7	310
1/15/2025 6:30	0.8	1.6	154	0.2	1.3	32	0.2	1.1	8
1/15/2025 6:00	1.2	1.3	128	0.2	0.5	11	0.2	0.5	286
1/15/2025 5:30	0.6	1.6	167	0.2	1.3	35	0.2	0.7	16
1/15/2025 5:00	0.7	3.8	219	0.2	0.5	4	0.2	0.4	340
1/15/2025 4:30	0.7	1.8	161	0.2	0.6	305	0.2	0.5	234
1/15/2025 4:00	0.7	2.0	173	0.2	0.9	359	0.2	0.7	30
1/15/2025 3:30	0.8	1.4	284	0.2	0.9	21	0.2	0.7	33
1/15/2025 3:00	0.7	2.7	301	0.2	2.0	38	0.2	1.0	80
1/15/2025 2:30	0.8	3.7	266	0.2	1.3	337	0.2	0.9	226
1/15/2025 2:00	0.9	4.6	250	0.6	2.6	312	0.2	1.1	121
1/15/2025 1:30	1.4	4.2	241	1.1	3.5	272	AX	0.7	21
1/15/2025 1:00	2.6	4.8	242	AX	3.9	241	0.2	2.7	233
1/15/2025 0:30	AX	5.0	234	2.3	2.0	223	0.6	0.8	262

30-Minute Avgs EST Ending @ Date / Time	Station 1			Station 2			Station 3		
	H2S	MET		H2S	MET		H2S	MET	
	ppb	WS - mph	WD - deg	ppb	WS - mph	WD - deg	ppb	WS - mph	WD - deg
1/15/2025 0:00	0.6	5.0	223	2.1	0.8	176	0.6	0.5	57
1/14/2025 23:30	0.6	3.6	207	1.0	0.8	129	0.8	0.5	84
1/14/2025 23:00	0.6	3.5	227	1.6	1.5	72	1.0	0.6	125
1/14/2025 22:30	0.6	4.8	212	1.4	1.8	201	2.0	1.3	53
1/14/2025 22:00	0.6	3.1	222	0.4	1.1	98	1.7	0.7	296
1/14/2025 21:30	0.6	3.1	226	1.3	1.3	87	2.1	1.0	94
1/14/2025 21:00	0.6	3.2	215	2.5	2.1	225	5.5	1.7	264
1/14/2025 20:30	0.6	3.6	204	0.5	1.7	219	4.9	1.2	216
1/14/2025 20:00	0.6	3.5	208	0.4	0.4	275	5.8	0.9	211
1/14/2025 19:30	0.6	2.5	190	0.2	0.5	269	3.1	0.9	217
1/14/2025 19:00	0.5	2.9	202	0.6	0.5	208	0.5	0.7	185
1/14/2025 18:30	0.4	3.1	209	3.6	2.0	216	0.2	1.3	251
1/14/2025 18:00	0.2	3.9	230	0.7	3.9	262	0.2	1.7	243
1/14/2025 17:30	0.4	4.2	259	0.2	3.8	273	0.2	0.9	242
1/14/2025 17:00	0.6	4.5	267	0.2	3.8	268	0.2	0.7	237
1/14/2025 16:30	0.6	4.1	232	0.2	3.6	255	0.2	1.2	282
1/14/2025 16:00	0.6	2.4	261	0.2	3.1	266	0.2	1.7	337
1/14/2025 15:30	0.6	4.5	306	0.2	3.1	284	0.2	1.6	325
1/14/2025 15:00	0.6	4.1	266	0.2	3.8	267	0.2	1.7	297
1/14/2025 14:30	0.5	5.7	314	0.2	5.6	256	0.2	2.4	263
1/14/2025 14:00	0.6	6.8	297	0.2	5.0	271	0.2	2.3	339
1/14/2025 13:30	0.6	6.0	283	0.2	4.5	270	0.2	2.2	271
1/14/2025 13:00	0.7	4.9	309	0.2	4.1	257	0.2	2.3	5
1/14/2025 12:30	0.8	4.5	310	0.2	3.2	273	0.2	2.9	349
1/14/2025 12:00	0.9	3.5	281	0.2	3.7	333	0.2	2.3	357
1/14/2025 11:30	1.0	4.8	343	0.2	3.5	355	0.2	2.6	349
1/14/2025 11:00	1.0	5.9	341	0.2	3.8	346	0.2	2.5	348
1/14/2025 10:30	0.8	5.6	334	0.2	1.4	1	0.2	2.1	10
1/14/2025 10:00	2.1	3.1	12	1.2	0.8	56	0.6	1.3	352
1/14/2025 9:30	0.7	1.2	150	2.1	0.2	69	1.3	0.4	67
1/14/2025 9:00	0.7	1.3	177	1.1	0.6	354	0.6	0.5	23
1/14/2025 8:30	0.8	1.3	190	0.2	0.5	358	0.2	0.3	25
1/14/2025 8:00	0.9	1.5	184	0.2	0.3	14	0.2	0.2	341
1/14/2025 7:30	0.9	1.1	191	0.2	0.7	11	0.2	0.3	12
1/14/2025 7:00	1.2	1.3	145	0.2	0.8	44	0.2	0.6	26
1/14/2025 6:30	1.0	1.4	162	0.7	1.1	31	0.2	0.5	40
1/14/2025 6:00	1.1	1.3	191	0.5	0.7	14	0.2	0.3	354
1/14/2025 5:30	1.2	1.6	186	0.9	0.5	356	0.2	0.3	295
1/14/2025 5:00	1.2	1.3	186	0.2	0.5	11	0.2	0.2	326
1/14/2025 4:30	1.4	0.9	178	0.2	0.8	16	0.2	0.4	344
1/14/2025 4:00	1.4	1.3	165	0.7	0.7	30	0.2	0.5	34
1/14/2025 3:30	1.4	1.1	184	0.2	0.5	38	0.2	0.2	348
1/14/2025 3:00	1.7	1.0	179	0.2	0.9	18	0.2	0.3	321
1/14/2025 2:30	1.8	1.6	183	0.2	0.5	10	0.2	0.2	250
1/14/2025 2:00	1.9	1.4	176	0.2	0.5	22	0.2	0.3	340
1/14/2025 1:30	2.0	1.2	185	0.7	0.5	26	AX	0.3	327
1/14/2025 1:00	3.0	1.1	175	AX	0.6	32	0.2	0.3	340
1/14/2025 0:30	AX	1.7	195	0.2	0.7	8	0.2	0.3	287

30-Minute Avgs EST Ending @ Date / Time	Station 1			Station 2			Station 3		
	H2S	MET		H2S	MET		H2S	MET	
	ppb	WS - mph	WD - deg	ppb	WS - mph	WD - deg	ppb	WS - mph	WD - deg
1/14/2025 0:00	2.2	1.5	182	0.2	0.6	32	0.2	0.3	317
1/13/2025 23:30	2.1	1.1	163	0.2	0.5	26	0.2	0.3	280
1/13/2025 23:00	2.0	1.3	194	0.2	0.9	27	0.5	0.5	69
1/13/2025 22:30	2.3	1.1	161	0.4	0.9	37	0.6	0.6	16
1/13/2025 22:00	2.3	2.0	159	0.6	1.0	41	0.7	0.7	67
1/13/2025 21:30	3.5	2.6	88	0.7	1.1	27	0.7	0.8	166
1/13/2025 21:00	0.8	1.6	185	1.0	1.2	17	2.1	0.9	340
1/13/2025 20:30	0.8	2.2	200	1.1	0.3	35	1.6	0.3	53
1/13/2025 20:00	0.8	2.6	204	1.0	0.3	48	1.3	0.3	25
1/13/2025 19:30	0.7	2.6	214	3.4	0.5	157	1.6	0.2	335
1/13/2025 19:00	0.6	3.2	213	3.6	0.8	183	0.7	0.3	336
1/13/2025 18:30	0.5	4.1	211	6.2	1.2	240	0.2	0.7	158
1/13/2025 18:00	0.5	3.3	193	1.7	0.8	274	0.2	1.1	204
1/13/2025 17:30	0.5	2.7	215	0.9	2.0	230	0.2	0.6	259
1/13/2025 17:00	0.6	3.5	233	0.2	4.0	254	0.2	1.1	241
1/13/2025 16:30	0.7	3.8	256	0.2	3.4	261	0.2	0.8	299
1/13/2025 16:00	0.7	2.8	257	0.2	3.4	229	0.4	2.2	169
1/13/2025 15:30	0.8	2.9	139	0.4	2.7	215	0.8	1.9	170
1/13/2025 15:00	0.9	2.4	157	0.9	2.4	194	0.7	1.6	144
1/13/2025 14:30	0.9	2.6	180	0.4	2.1	130	0.2	2.4	76
1/13/2025 14:00	0.8	3.3	182	0.5	2.2	198	0.2	1.5	53
1/13/2025 13:30	0.8	2.8	219	0.4	2.6	218	0.2	1.8	186
1/13/2025 13:00	0.8	1.9	210	0.7	2.7	204	0.2	1.4	113
1/13/2025 12:30	0.8	2.9	202	0.2	2.5	225	0.2	1.1	314
1/13/2025 12:00	0.7	3.5	261	0.2	2.9	264	0.2	1.4	351
1/13/2025 11:30	0.7	3.6	286	0.2	3.8	276	0.2	1.3	264
1/13/2025 11:00	0.8	3.0	287	0.2	1.4	24	0.2	1.3	7
1/13/2025 10:30	0.7	1.6	229	1.6	2.1	262	0.2	0.9	351
1/13/2025 10:00	0.8	1.8	230	1.7	1.6	239	1.0	0.7	305
1/13/2025 9:30	0.7	1.3	206	0.2	0.5	274	1.2	0.9	163
1/13/2025 9:00	0.7	1.8	196	0.2	0.5	259	1.8	0.7	191
1/13/2025 8:30	0.7	1.7	183	0.7	0.8	192	2.0	0.4	146
1/13/2025 8:00	0.8	1.1	232	0.2	0.7	212	2.4	0.4	283
1/13/2025 7:30	0.7	2.2	210	0.2	0.7	234	2.4	0.7	131
1/13/2025 7:00	0.7	2.3	208	0.2	1.0	201	1.4	0.8	198
1/13/2025 6:30	0.7	2.1	194	0.4	1.2	190	0.6	0.3	164
1/13/2025 6:00	0.8	1.9	196	1.4	0.6	168	0.2	0.3	211
1/13/2025 5:30	0.8	1.8	194	0.2	1.0	15	0.2	0.5	191
1/13/2025 5:00	0.7	1.6	200	0.2	0.7	10	0.2	0.3	44
1/13/2025 4:30	0.8	1.1	198	0.2	0.7	280	0.2	0.5	185
1/13/2025 4:00	0.8	1.4	150	0.2	0.8	110	0.2	0.6	130
1/13/2025 3:30	0.9	1.9	204	0.2	0.9	258	0.2	0.7	244
1/13/2025 3:00	1.0	1.5	166	0.2	0.3	349	0.2	0.4	142
1/13/2025 2:30	1.1	0.8	93	0.2	0.8	18	0.2	0.4	333
1/13/2025 2:00	1.2	1.1	289	0.2	0.8	318	0.4	0.6	323
1/13/2025 1:30	1.4	1.6	188	0.5	0.3	267	AX	0.5	332
1/13/2025 1:00	2.1	1.1	188	AX	0.5	239	0.4	0.5	298
1/13/2025 0:30	AX	2.2	190	0.2	0.7	286	0.2	0.6	162

30-Minute Avgs EST Ending @ Date / Time	Station 1			Station 2			Station 3		
	H2S	MET		H2S	MET		H2S	MET	
	ppb	WS - mph	WD - deg	ppb	WS - mph	WD - deg	ppb	WS - mph	WD - deg
1/13/2025 0:00	0.7	1.0	105	0.2	1.1	36	0.2	0.8	28
1/12/2025 23:30	0.7	1.7	189	0.2	0.2	309	0.2	0.3	195
1/12/2025 23:00	0.7	1.0	152	0.2	0.9	44	0.2	0.6	12
1/12/2025 22:30	0.7	1.2	137	0.5	0.8	17	0.2	0.4	1
1/12/2025 22:00	0.7	1.6	188	0.2	0.5	38	0.2	0.4	264
1/12/2025 21:30	0.7	1.4	180	0.2	1.0	54	0.6	0.5	30
1/12/2025 21:00	0.7	2.1	195	0.2	0.5	250	0.2	0.3	222
1/12/2025 20:30	0.7	1.1	163	0.2	0.6	25	0.2	0.2	255
1/12/2025 20:00	0.6	1.6	185	0.2	0.2	285	0.2	0.3	259
1/12/2025 19:30	0.8	1.3	172	0.2	0.4	8	0.2	0.4	95
1/12/2025 19:00	0.6	1.6	179	0.2	0.6	45	0.2	0.3	345
1/12/2025 18:30	0.7	3.1	205	0.2	0.5	339	0.2	0.4	347
1/12/2025 18:00	0.7	1.5	207	0.2	0.7	82	0.2	0.3	339
1/12/2025 17:30	0.5	2.1	254	0.2	1.7	297	0.2	0.3	266
1/12/2025 17:00	0.6	4.0	253	0.2	3.1	254	0.2	1.0	283
1/12/2025 16:30	0.7	4.1	260	0.2	4.5	266	0.2	1.4	301
1/12/2025 16:00	0.7	4.3	247	0.2	4.2	241	0.2	1.6	275
1/12/2025 15:30	0.7	4.0	272	0.2	3.8	219	0.2	2.2	200
1/12/2025 15:00	0.7	3.4	316	0.2	3.7	214	0.2	1.6	265
1/12/2025 14:30	0.7	4.6	208	0.2	2.9	235	0.2	2.2	5
1/12/2025 14:00	0.7	3.7	238	0.2	3.4	228	0.2	3.3	181
1/12/2025 13:30	0.8	3.7	252	0.2	3.6	207	0.2	2.8	160
1/12/2025 13:00	0.7	3.9	200	0.2	3.2	211	0.2	2.4	187
1/12/2025 12:30	0.8	2.2	323	0.2	2.6	265	0.2	2.2	163
1/12/2025 12:00	0.8	3.2	202	0.2	3.1	240	0.2	2.3	178
1/12/2025 11:30	0.9	2.4	80	0.2	2.4	196	0.2	2.0	52
1/12/2025 11:00	1.8	2.8	16	0.2	1.5	358	0.2	1.4	45
1/12/2025 10:30	2.6	1.5	358	0.2	1.6	21	0.2	1.5	17
1/12/2025 10:00	3.4	0.7	24	0.2	0.4	163	0.2	1.7	6
1/12/2025 9:30	4.2	1.0	110	0.2	0.3	324	0.2	0.7	59
1/12/2025 9:00	4.2	0.7	128	0.2	0.6	57	0.2	0.6	63
1/12/2025 8:30	4.0	0.8	116	0.2	0.9	48	0.2	0.9	10
1/12/2025 8:00	0.9	0.7	167	0.2	0.8	34	0.2	0.7	15
1/12/2025 7:30	1.1	1.1	197	0.2	0.8	30	0.4	0.5	7
1/12/2025 7:00	1.1	1.0	178	0.2	0.8	31	0.6	0.4	343
1/12/2025 6:30	1.1	1.7	189	0.2	0.5	26	0.6	0.3	274
1/12/2025 6:00	1.1	1.2	201	0.2	0.4	26	0.7	0.3	257
1/12/2025 5:30	1.2	0.9	160	0.2	0.8	36	0.9	0.6	357
1/12/2025 5:00	1.2	0.8	185	0.2	0.7	33	0.8	0.5	4
1/12/2025 4:30	1.3	0.7	142	0.5	0.9	35	0.2	0.6	358
1/12/2025 4:00	1.6	1.5	191	0.7	1.2	29	0.2	0.7	15
1/12/2025 3:30	1.7	1.8	202	0.7	0.5	19	0.4	0.5	294
1/12/2025 3:00	1.7	3.2	193	0.2	0.4	171	0.5	0.5	266
1/12/2025 2:30	2.0	2.3	196	0.6	0.6	309	2.2	0.6	253
1/12/2025 2:00	2.5	1.7	198	1.6	1.2	49	BF	0.9	12
1/12/2025 1:30	3.9	1.8	185	BF	0.9	356	BF	0.6	290
1/12/2025 1:00	BF	2.0	196	BF	1.2	23	0.2	0.9	53
1/12/2025 0:30	BF	2.2	190	0.2	1.4	30	0.2	0.9	320

30-Minute Avgs EST Ending @ Date / Time	Station 1			Station 2			Station 3		
	H2S	MET		H2S	MET		H2S	MET	
	ppb	WS - mph	WD - deg	ppb	WS - mph	WD - deg	ppb	WS - mph	WD - deg
1/12/2025 0:00	2.4	3.4	184	0.2	1.6	110	0.2	1.4	73
1/11/2025 23:30	2.7	3.6	39	0.2	2.1	44	0.2	1.7	54
1/11/2025 23:00	3.9	6.2	12	0.2	1.5	11	0.2	1.0	349
1/11/2025 22:30	4.4	2.9	35	0.2	1.9	12	0.2	1.5	334
1/11/2025 22:00	3.9	2.8	80	0.2	2.2	44	0.2	1.5	40
1/11/2025 21:30	2.8	2.0	319	0.2	2.0	31	0.2	1.4	344
1/11/2025 21:00	3.4	2.5	54	0.2	1.7	15	0.2	1.2	246
1/11/2025 20:30	2.3	6.3	15	0.2	1.1	57	0.2	0.7	20
1/11/2025 20:00	3.1	7.2	10	0.2	1.4	47	0.2	0.9	1
1/11/2025 19:30	1.0	2.9	339	0.2	1.9	33	0.2	0.8	12
1/11/2025 19:00	0.9	4.1	290	0.2	1.3	9	0.2	1.0	173
1/11/2025 18:30	1.6	8.0	327	0.2	1.0	5	0.2	0.7	203
1/11/2025 18:00	2.8	5.7	345	0.2	2.2	343	0.2	1.1	295
1/11/2025 17:30	1.6	6.5	336	0.2	3.6	345	0.2	2.1	338
1/11/2025 17:00	1.4	6.9	338	0.2	4.7	349	0.2	3.5	352
1/11/2025 16:30	1.0	5.4	285	0.2	5.3	319	0.2	3.1	352
1/11/2025 16:00	1.0	6.9	298	0.2	7.7	265	0.2	1.5	284
1/11/2025 15:30	0.9	9.8	299	0.2	7.6	271	0.2	1.9	290
1/11/2025 15:00	0.9	9.3	311	0.2	9.3	271	0.2	2.5	272
1/11/2025 14:30	1.0	11.8	315	0.2	6.9	285	0.2	1.6	285
1/11/2025 14:00	0.9	8.0	303	0.2	7.0	276	0.2	1.7	278
1/11/2025 13:30	1.0	7.3	292	0.2	7.7	279	0.2	1.8	287
1/11/2025 13:00	1.0	10.0	299	0.2	7.6	291	0.2	1.7	286
1/11/2025 12:30	1.0	6.2	276	0.8	6.4	257	0.2	1.9	263
1/11/2025 12:00	1.0	5.0	241	1.2	6.3	263	0.2	1.7	262
1/11/2025 11:30	1.0	5.0	237	1.6	5.7	263	0.2	2.8	244
1/11/2025 11:00	1.0	4.3	184	1.7	1.2	269	0.2	2.2	238
1/11/2025 10:30	1.0	5.5	249	0.9	0.2	266	0.2	1.2	222
1/11/2025 10:00	1.0	5.8	241	0.8	0.2	283	0.2	0.2	226
1/11/2025 9:30	1.0	5.9	249	1.1	0.2	267	0.2	0.2	254
1/11/2025 9:00	1.0	5.4	263	0.2	0.2	279	0.2	0.2	279
1/11/2025 8:30	1.0	6.0	256	0.6	0.2	276	0.2	0.2	286
1/11/2025 8:00	1.0	6.1	258	0.5	0.2	279	0.2	0.2	308
1/11/2025 7:30	1.1	5.4	246	1.5	0.2	268	0.2	0.2	48
1/11/2025 7:00	1.0	4.5	236	1.1	0.2	265	0.2	0.2	24
1/11/2025 6:30	1.1	3.7	252	0.6	0.2	281	0.2	0.2	294
1/11/2025 6:00	1.2	3.8	220	1.3	0.2	234	0.2	0.2	290
1/11/2025 5:30	1.1	3.3	235	0.8	0.2	252	0.2	0.2	57
1/11/2025 5:00	1.1	4.0	227	0.9	0.2	235	0.6	0.2	57
1/11/2025 4:30	1.2	3.2	199	0.2	0.2	212	0.4	0.2	57
1/11/2025 4:00	1.3	3.0	197	0.2	0.2	176	0.2	0.2	57
1/11/2025 3:30	1.6	2.1	184	0.2	0.2	339	0.2	0.2	57
1/11/2025 3:00	1.9	2.2	175	0.2	0.2	313	0.2	0.2	57
1/11/2025 2:30	2.0	1.4	283	0.2	0.2	351	0.2	0.2	57
1/11/2025 2:00	2.4	1.9	60	0.2	0.2	360	0.7	0.2	56
1/11/2025 1:30	2.8	5.5	352	0.5	0.2	322	AX	0.2	0
1/11/2025 1:00	2.9	7.6	353	AX	0.2	301	0.2	0.5	351
1/11/2025 0:30	AX	8.4	9	0.2	2.4	0	0.2	2.5	2

30-Minute Avgs EST Ending @ Date / Time	Station 1			Station 2			Station 3		
	H2S	MET		H2S	MET		H2S	MET	
	ppb	WS - mph	WD - deg	ppb	WS - mph	WD - deg	ppb	WS - mph	WD - deg
1/11/2025 0:00	1.3	7.1	323	0.2	3.7	358	0.2	2.7	1
1/10/2025 23:30	1.3	7.2	328	0.2	3.0	356	0.2	2.9	355
1/10/2025 23:00	1.8	6.7	10	0.2	2.3	16	0.2	2.1	9
1/10/2025 22:30	2.0	4.7	32	0.2	1.5	38	0.2	1.8	21
1/10/2025 22:00	1.5	8.8	348	0.2	3.5	359	0.2	2.9	360
1/10/2025 21:30	1.1	5.4	15	0.2	3.1	10	0.2	1.8	351
1/10/2025 21:00	0.9	7.4	129	0.2	3.0	116	0.2	1.9	130
1/10/2025 20:30	0.9	4.5	127	0.2	1.8	154	0.2	1.6	152
1/10/2025 20:00	1.0	4.7	149	0.2	2.3	160	0.2	1.9	170
1/10/2025 19:30	0.9	4.1	149	0.2	2.0	164	0.2	1.7	176
1/10/2025 19:00	0.9	4.4	158	0.2	1.7	184	0.2	2.0	184
1/10/2025 18:30	0.8	3.5	124	0.2	1.3	100	0.2	1.6	165
1/10/2025 18:00	0.9	2.9	109	0.2	1.4	113	0.2	1.3	140
1/10/2025 17:30	0.9	2.3	157	0.2	0.9	115	0.2	1.0	169
1/10/2025 17:00	0.9	3.4	181	0.2	1.8	227	0.7	1.8	192
1/10/2025 16:30	0.9	4.9	174	0.2	2.6	202	0.2	2.2	190
1/10/2025 16:00	0.8	3.3	179	0.2	2.6	219	0.2	2.0	194
1/10/2025 15:30	0.8	5.0	202	0.2	3.8	232	0.2	2.5	201
1/10/2025 15:00	0.8	4.5	180	0.2	2.4	178	0.2	2.5	184
1/10/2025 14:30	1.0	2.0	159	0.2	1.3	114	0.2	1.0	174
1/10/2025 14:00	1.0	2.2	112	0.2	1.0	126	0.2	0.9	101
1/10/2025 13:30	1.1	3.5	48	0.2	2.0	56	0.2	2.0	38
1/10/2025 13:00	0.8	2.9	110	0.2	1.4	64	0.2	1.6	92
1/10/2025 12:30	0.8	1.6	168	0.2	1.0	223	0.2	1.0	101
1/10/2025 12:00	0.9	1.2	151	0.4	1.7	227	0.6	1.5	178
1/10/2025 11:30	0.8	2.5	203	0.5	1.8	259	0.8	1.5	165
1/10/2025 11:00	0.8	2.6	222	0.2	1.9	249	0.7	1.7	190
1/10/2025 10:30	0.9	3.4	205	0.2	2.5	225	0.8	1.2	210
1/10/2025 10:00	0.9	3.3	214	0.4	3.4	224	0.9	1.7	228
1/10/2025 9:30	1.0	4.3	210	0.7	3.3	220	0.9	1.3	230
1/10/2025 9:00	1.3	3.4	213	0.6	2.5	228	0.2	0.6	269
1/10/2025 8:30	1.7	2.4	195	0.2	0.7	294	0.2	0.6	218
1/10/2025 8:00	2.1	0.5	169	0.2	0.4	5	0.2	0.3	180
1/10/2025 7:30	2.5	0.7	176	0.2	1.2	10	0.2	0.4	317
1/10/2025 7:00	3.2	2.2	185	0.2	0.7	297	0.2	0.7	215
1/10/2025 6:30	4.5	1.2	72	0.2	0.2	323	0.2	0.5	172
1/10/2025 6:00	5.1	3.2	45	0.2	0.4	25	0.2	0.9	208
1/10/2025 5:30	1.5	1.7	53	0.2	1.3	29	0.2	0.7	355
1/10/2025 5:00	1.6	1.6	212	0.2	0.4	348	0.2	0.3	273
1/10/2025 4:30	1.7	1.0	201	0.2	0.6	11	0.2	0.5	18
1/10/2025 4:00	2.2	1.3	204	0.2	0.6	37	0.2	0.5	309
1/10/2025 3:30	2.4	0.8	215	0.2	1.2	356	0.2	0.6	342
1/10/2025 3:00	3.1	1.3	96	0.2	0.6	50	0.2	0.4	111
1/10/2025 2:30	1.9	1.1	120	0.2	1.3	6	0.2	0.7	325
1/10/2025 2:00	2.0	4.4	48	0.2	1.6	20	0.7	0.9	92
1/10/2025 1:30	2.0	1.3	131	0.6	1.2	34	AX	0.7	39
1/10/2025 1:00	2.0	1.3	189	AX	1.2	33	0.2	0.6	353
1/10/2025 0:30	AX	1.2	237	0.2	1.3	39	0.2	1.1	346

AQS Null Data Codes	
Qualifier Code	Item Description
AB	TECHNICIAN UNAVAILABLE
AC	CONSTRUCTION/REPAIRS IN AREA
AD	SHELTER STORM DAMAGE
AE	SHELTER TEMPERATURE OUTSIDE LIMITS
AI	INSUFFICIENT DATA (CAN'T CALCULATE)
AM	MISCELLANEOUS VOID
AN	MACHINE MALFUNCTION
AO	BAD WEATHER
AP	VANDALISM
AS	POOR QUALITY ASSURANCE RESULTS
AT	CALIBRATION
AU	MONITORING WAIVED
AV	POWER FAILURE (POWR)
AW	WILDLIFE DAMAGE
AX	PRECISION CHECK (PREC)
AY	Q C CONTROL POINTS (ZERO/SPAN)
BA	MAINTENANCE/ROUTINE REPAIRS
BB	UNABLE TO REACH SITE
BC	MULTI-POINT CALIBRATION
BD	AUTO CALIBRATION
BE	BUILDING/SITE REPAIR
BF	PRECISION/ZERO/SPAN
BJ	OPERATOR ERROR
BK	SITE COMPUTER/DATA LOGGER DOWN
BL	Q C AUDIT (AUDT)
EC	EXCEED CRITICAL CRITERIA