



New-Indy Catawba LLC
 P.O. Box 7
 5300 Cureton Ferry Road
 Catawba, SC 29704

Kevin Taylor
 Environmental Engineer
 Air Enforcement Branch
 Enforcement and Compliance Assurance Division
 US Environmental Protection Agency, Region 4
 61 Forsythe Street, SW
 Atlanta, GA 30303

December 13, 2024

Mr. Taylor:

I am submitting this report pursuant to Paragraph 2(b) of EPA's November 16, 2022, Consent Decree. Attached is a map indicating the locations of the three on-site monitors and a summary table of recent 7-day rolling average values. Also attached are the compiled 30-minute average values for both H₂S readings and meteorological data for each onsite monitoring station.

Paragraph 2(b)

The rolling 7-day averages for H₂S readings for this period are summarized as follows:

7-day Period		Onsite 7-day Avgs, ppb H ₂ S		
Period Start (EST)	Period End (EST)	Station 1	Station 2	Station 3
12/06/2024 00:00	12/12/2024 23:59	0.9	0.5	0.6

As required by the Order, New-Indy is continually evaluating its ongoing operations and shall continue developing response actions which include the following, among others:

1. New-Indy's environmental consultant continues to remotely monitor and evaluates each monitoring station's performance on a regular basis, daily checking and validating the precision checks for each station.
2. The mill continues to supplement the WWTP with peroxide and ferric chloride as discussed in previous reports.
3. New-Indy continues monitoring and optimizing mill processes to minimize organic and chemical losses to the sewer. The sustained reduction in daily H₂S levels and rolling averages continues to demonstrate New Indy's successful implementation of corrective actions.
4. The permanent activated carbon filtration unit continues to operate at the outfall structure (PAB, Post Aeration Basin) to potentially reduce variable ambient H₂S and VOC emissions.
5. SCDHEC has approved Trial requests from New Indy Catawba for the use of an industrial odor-reducing aerosol spray (not a masking agent, but an odor reducing agent) and oxygen injection into the primary clarifier influent.

Please let me know if you have questions.

Thank you.

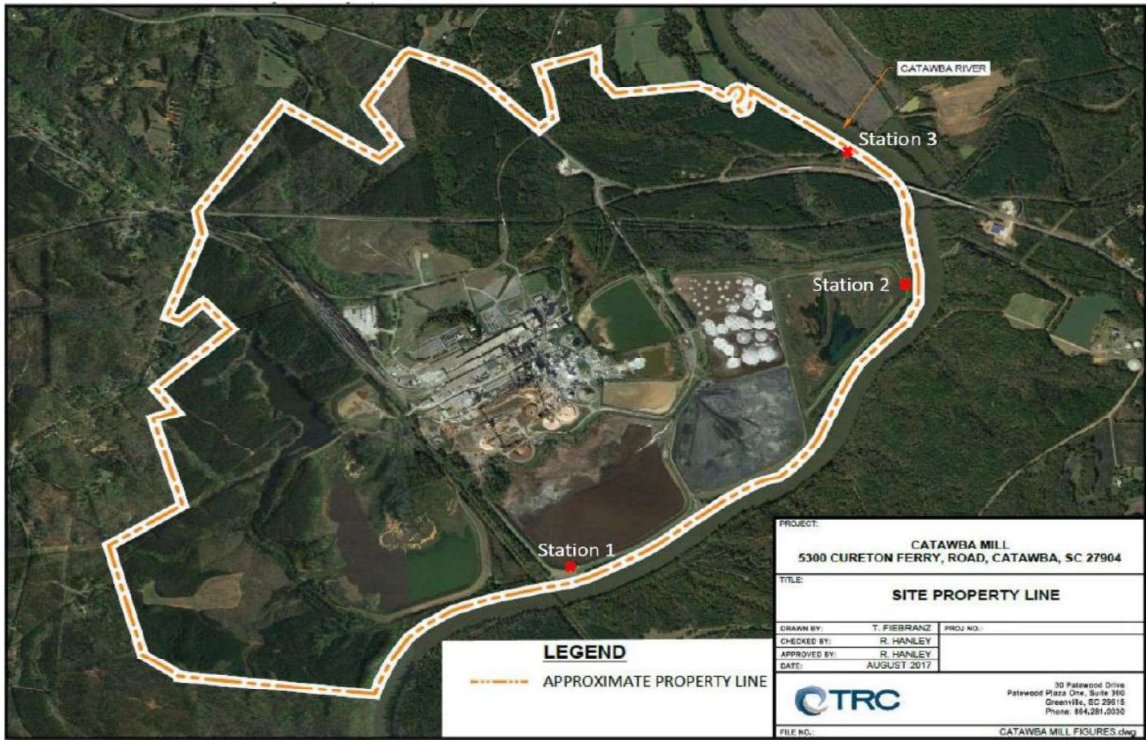
Glenn Rogers
 Environmental Manager

cc: Marirose J. Pratt
 Associate Regional Counsel
 Air & EPCRA Law Office
 US Environmental Protection Agency, Region 4
 Sam Nunn Atlanta Federal Center
 61 Forsythe Street, SW
 Atlanta, GA 30303

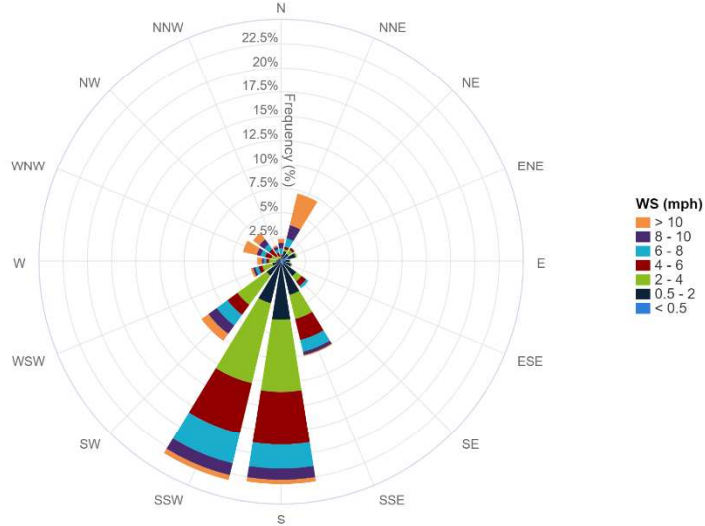
Attachments:

Monitor Location Map

7-day History (includes 24-hr daily averages, Wind Distribution data, 30-minute averages, and AQS Null Data codes)



7-Day Wind Rose Plot
 [From 12/06/2024 00:00 to 12/12/2024 23:59]



7-Day Period			Onsite 7-day Avgs, ppb H ₂ S			24hr Period	Onsite 24hr Avgs, ppb H ₂ S		
Period Start (EST)	Period End (EST)		Station 1	Station 2	Station 3	Calendar Day	Station 1	Station 2	Station 3
11/30/2024 00:00	12/06/2024 23:59		1.1	0.4	0.4	12/06/2024 00:00 – 24:00	0.6	0.4	0.3
12/01/2024 00:00	12/07/2024 23:59		1.1	0.4	0.5	12/07/2024	1.0	0.7	0.6
12/02/2024 00:00	12/08/2024 23:59		1.1	0.4	0.5	12/08/2024	0.4	0.8	1.0
12/03/2024 00:00	12/09/2024 23:59		0.8	0.4	0.5	12/09/2024	1.0	0.3	0.6
12/04/2024 00:00	12/10/2024 23:59		0.8	0.5	0.6	12/10/2024	1.3	0.5	0.4
12/05/2024 00:00	12/11/2024 23:59		0.9	0.5	0.6	12/11/2024	1.0	0.4	0.7
12/06/2024 00:00	12/12/2024 23:59		0.9	0.5	0.6	12/12/2024	0.7	0.6	0.5

30-Minute Avgs EST Ending @ Date / Time	Station 1			Station 2			Station 3		
	H2S	MET		H2S	MET		H2S	MET	
	ppb	WS - mph	WD - deg	ppb	WS - mph	WD - deg	ppb	WS - mph	WD - deg
12/13/2024 0:00	0.5	1.7	185	0.2	0.2	348	0.6	0.2	43
12/12/2024 23:30	0.2	1.6	190	0.2	0.7	352	0.2	0.3	325
12/12/2024 23:00	0.4	1.5	178	0.2	0.6	8	0.2	0.2	22
12/12/2024 22:30	0.4	1.4	170	0.2	0.3	37	0.2	0.3	40
12/12/2024 22:00	0.4	1.2	197	0.2	0.8	19	0.6	0.5	5
12/12/2024 21:30	0.2	1.4	184	0.6	0.3	298	0.9	0.2	312
12/12/2024 21:00	0.2	1.4	188	0.2	0.4	350	0.7	0.3	299
12/12/2024 20:30	0.2	1.4	169	0.2	0.7	12	1.1	0.5	357
12/12/2024 20:00	0.2	1.3	189	0.2	0.6	216	1.6	0.6	197
12/12/2024 19:30	0.2	1.6	194	0.5	0.5	298	1.8	0.4	210
12/12/2024 19:00	0.4	1.7	186	0.2	0.5	238	1.0	0.4	253
12/12/2024 18:30	0.2	2.1	191	0.2	0.5	56	0.5	0.6	114
12/12/2024 18:00	0.2	2.5	208	0.2	0.8	241	0.2	0.6	228
12/12/2024 17:30	0.2	2.7	205	0.2	0.7	253	0.2	0.7	231
12/12/2024 17:00	0.2	1.9	201	0.2	1.2	312	0.2	1.0	220
12/12/2024 16:30	2.8	3.6	307	0.2	2.5	301	0.2	0.4	241
12/12/2024 16:00	1.0	5.9	297	0.2	2.9	322	0.2	0.7	310
12/12/2024 15:30	0.9	7.6	307	0.2	3.7	306	0.2	1.2	315
12/12/2024 15:00	0.7	5.4	301	0.2	3.6	308	0.2	1.5	313
12/12/2024 14:30	0.9	5.0	292	0.2	3.5	326	0.2	2.6	345
12/12/2024 14:00	0.8	4.9	311	0.2	5.1	284	0.2	1.6	313
12/12/2024 13:30	1.0	5.3	290	0.2	3.4	260	0.2	2.0	311
12/12/2024 13:00	0.4	2.6	235	0.2	3.3	188	0.2	2.3	183
12/12/2024 12:30	0.2	2.8	210	0.2	2.8	197	0.2	1.5	294
12/12/2024 12:00	0.7	2.9	273	0.2	3.0	229	0.2	1.6	229
12/12/2024 11:30	0.8	3.1	266	0.2	2.9	227	0.2	1.8	11
12/12/2024 11:00	1.5	4.0	288	0.2	2.3	254	0.2	2.2	171
12/12/2024 10:30	1.3	4.6	277	0.2	3.3	269	0.2	1.3	275
12/12/2024 10:00	1.7	5.4	296	0.2	3.2	317	0.2	1.2	324
12/12/2024 9:30	2.0	5.2	297	0.2	1.7	348	0.2	1.4	341
12/12/2024 9:00	2.3	1.7	269	0.2	0.9	21	0.2	0.7	328
12/12/2024 8:30	0.6	1.4	86	0.2	1.1	38	0.2	0.9	16
12/12/2024 8:00	0.4	2.7	183	0.2	1.0	51	0.2	0.3	20
12/12/2024 7:30	0.4	1.7	187	0.2	0.9	359	0.2	0.4	78
12/12/2024 7:00	0.5	2.3	225	0.2	0.8	4	0.2	0.5	342
12/12/2024 6:30	0.4	1.3	213	0.2	0.4	20	0.2	0.3	175
12/12/2024 6:00	0.5	1.6	239	0.2	0.5	18	0.2	0.2	314
12/12/2024 5:30	0.9	2.6	290	0.2	1.1	33	0.2	0.6	31
12/12/2024 5:00	0.5	2.7	254	0.2	1.3	4	0.2	0.3	239
12/12/2024 4:30	0.6	3.1	179	0.2	1.3	330	0.2	0.4	199
12/12/2024 4:00	0.6	2.9	188	0.4	2.5	299	0.2	0.3	248
12/12/2024 3:30	0.6	1.2	33	1.9	2.7	272	0.2	0.8	287
12/12/2024 3:00	0.6	1.7	199	4.5	2.4	220	0.2	1.6	263
12/12/2024 2:30	0.7	2.7	223	1.9	3.5	214	0.4	2.8	245
12/12/2024 2:00	0.9	2.6	213	5.3	3.1	244	2.4	2.5	214
12/12/2024 1:30	1.5	1.2	171	5.5	1.7	238	AX	0.9	241
12/12/2024 1:00	2.0	2.3	212	AX	1.0	246	1.5	0.5	324
12/12/2024 0:30	AX	3.2	206	0.6	1.1	212	1.5	0.5	42

30-Minute Avgs EST Ending @ Date / Time	Station 1			Station 2			Station 3		
	H2S	MET		H2S	MET		H2S	MET	
	ppb	WS - mph	WD - deg	ppb	WS - mph	WD - deg	ppb	WS - mph	WD - deg
12/12/2024 0:00	1.4	2.1	185	0.2	1.2	201	1.9	1.5	212
12/11/2024 23:30	2.3	3.3	227	1.5	1.4	26	1.9	1.1	143
12/11/2024 23:00	0.4	3.7	203	2.3	1.4	228	1.5	1.0	218
12/11/2024 22:30	0.6	3.0	176	0.2	1.2	225	0.7	1.2	223
12/11/2024 22:00	0.6	2.0	188	0.2	0.6	24	0.2	0.7	268
12/11/2024 21:30	0.6	2.3	240	0.2	1.5	32	0.2	0.6	170
12/11/2024 21:00	0.6	5.0	315	0.2	2.7	302	0.2	0.9	230
12/11/2024 20:30	0.6	6.4	301	0.2	4.5	304	0.2	1.3	270
12/11/2024 20:00	0.7	9.3	301	0.2	7.1	285	0.2	1.5	280
12/11/2024 19:30	0.7	9.5	301	0.2	7.0	286	0.2	1.7	278
12/11/2024 19:00	0.7	10.9	302	0.2	7.5	287	0.2	1.5	268
12/11/2024 18:30	0.8	12.9	300	0.2	8.8	281	0.2	1.6	270
12/11/2024 18:00	0.7	12.1	296	0.2	9.6	285	0.2	2.0	277
12/11/2024 17:30	0.7	11.8	290	0.2	9.6	280	0.2	2.2	270
12/11/2024 17:00	0.7	12.0	287	0.2	8.2	282	0.2	2.0	283
12/11/2024 16:30	0.8	14.2	297	0.2	13.0	285	0.2	3.4	274
12/11/2024 16:00	0.7	13.5	282	0.2	12.2	266	0.2	3.2	265
12/11/2024 15:30	1.0	12.4	296	0.2	13.7	277	0.2	3.3	271
12/11/2024 15:00	1.1	12.9	279	0.5	11.8	278	0.2	3.0	269
12/11/2024 14:30	1.0	11.3	242	0.8	10.6	248	0.2	4.7	257
12/11/2024 14:00	1.0	11.3	222	0.8	9.7	239	0.2	4.5	241
12/11/2024 13:30	1.0	8.6	225	1.1	10.6	241	0.2	4.1	248
12/11/2024 13:00	1.0	9.5	233	1.1	10.5	243	0.2	5.1	244
12/11/2024 12:30	1.0	6.3	218	1.0	7.3	232	1.5	4.0	244
12/11/2024 12:00	1.0	7.8	208	0.7	7.0	230	BL	BL	BL
12/11/2024 11:30	1.0	8.8	216	1.4	8.3	233	BL	2.8	270
12/11/2024 11:00	1.1	9.4	211	0.7	6.2	226	BL	4.2	224
12/11/2024 10:30	1.1	6.7	199	0.2	5.4	215	BL	3.6	219
12/11/2024 10:00	1.1	6.5	178	0.2	3.7	188	0.2	2.7	207
12/11/2024 9:30	1.0	6.7	159	0.2	2.5	166	0.2	2.2	159
12/11/2024 9:00	1.0	5.8	179	0.2	3.8	202	0.9	1.9	198
12/11/2024 8:30	1.3	3.8	196	0.2	1.9	201	2.5	1.1	199
12/11/2024 8:00	1.0	3.0	197	0.2	1.4	197	0.6	1.1	178
12/11/2024 7:30	1.0	6.6	196	0.6	5.6	214	1.1	3.0	215
12/11/2024 7:00	0.9	6.4	198	0.2	4.7	214	1.7	2.8	213
12/11/2024 6:30	0.9	5.1	189	0.2	3.7	205	0.6	2.5	198
12/11/2024 6:00	0.9	7.3	200	0.2	5.0	219	1.1	3.5	211
12/11/2024 5:30	0.9	7.7	193	0.2	5.1	212	1.2	3.2	207
12/11/2024 5:00	1.0	7.8	194	0.2	5.7	212	1.2	3.1	208
12/11/2024 4:30	1.1	8.1	189	0.2	5.1	212	1.1	3.2	206
12/11/2024 4:00	1.1	8.2	196	0.2	5.7	210	1.3	3.5	220
12/11/2024 3:30	1.2	7.2	195	0.2	5.1	210	1.1	3.7	211
12/11/2024 3:00	1.2	8.7	191	0.2	6.2	209	0.7	4.5	202
12/11/2024 2:30	1.4	8.6	172	0.2	4.7	192	0.2	3.7	190
12/11/2024 2:00	1.4	7.3	178	0.2	4.2	193	0.6	3.3	182
12/11/2024 1:30	2.0	8.0	178	0.7	4.9	196	AX	4.0	191
12/11/2024 1:00	2.8	8.2	172	AX	4.4	191	0.2	3.2	189
12/11/2024 0:30	AX	5.7	172	0.2	2.7	193	0.2	1.9	190

30-Minute Avgs EST Ending @ Date / Time	Station 1			Station 2			Station 3		
	H2S	MET		H2S	MET		H2S	MET	
	ppb	WS - mph	WD - deg	ppb	WS - mph	WD - deg	ppb	WS - mph	WD - deg
12/11/2024 0:00	1.3	7.7	167	0.2	3.9	189	0.2	3.2	180
12/10/2024 23:30	1.3	6.8	171	0.2	4.5	187	0.2	2.9	175
12/10/2024 23:00	1.2	6.7	169	0.2	2.9	181	0.2	2.8	180
12/10/2024 22:30	1.1	5.8	163	0.2	2.1	174	0.2	2.0	164
12/10/2024 22:00	1.1	6.0	168	0.2	2.9	187	0.2	2.0	185
12/10/2024 21:30	1.0	4.4	158	0.2	1.4	170	0.2	1.0	169
12/10/2024 21:00	0.9	2.3	167	0.2	0.8	105	0.2	0.5	147
12/10/2024 20:30	0.8	3.6	167	0.2	1.3	175	0.2	1.4	206
12/10/2024 20:00	0.9	4.1	148	0.2	1.2	132	0.2	1.2	168
12/10/2024 19:30	0.9	3.4	145	0.2	1.2	114	0.2	1.1	180
12/10/2024 19:00	1.0	3.5	140	0.2	1.5	126	0.2	1.3	168
12/10/2024 18:30	1.3	3.5	148	0.2	1.4	113	0.2	1.2	154
12/10/2024 18:00	1.3	2.5	170	0.2	2.1	151	0.2	1.4	148
12/10/2024 17:30	BA	6.1	160	0.2	2.4	173	0.2	2.2	174
12/10/2024 17:00	BA	6.4	149	0.2	2.0	146	0.2	1.8	155
12/10/2024 16:30	BA	4.6	154	0.2	1.3	142	0.2	1.0	154
12/10/2024 16:00	BA	2.7	160	0.2	1.2	164	0.2	0.8	134
12/10/2024 15:30	BA	3.8	174	0.2	1.9	190	0.2	1.5	197
12/10/2024 15:00	0.8	5.1	162	BL	BL	BL	0.2	1.6	171
12/10/2024 14:30	0.9	4.8	176	BL	BL	BL	0.2	2.1	185
12/10/2024 14:00	1.0	5.0	185	BL	BL	BL	0.2	1.9	194
12/10/2024 13:30	1.3	6.1	183	BL	3.7	201	0.5	2.6	191
12/10/2024 13:00	1.4	5.2	183	BL	3.6	204	0.2	2.6	198
12/10/2024 12:30	BL	5.5	184	0.2	4.4	204	0.2	2.7	192
12/10/2024 12:00	BL	6.4	183	0.2	4.8	203	0.4	3.3	201
12/10/2024 11:30	BL	7.4	187	0.2	5.6	209	0.6	3.3	214
12/10/2024 11:00	BL	6.4	188	0.2	5.1	205	0.6	3.7	201
12/10/2024 10:30	BL	5.7	193	0.2	3.2	207	1.1	2.2	195
12/10/2024 10:00	BL	5.9	194	0.2	3.8	208	0.6	2.5	202
12/10/2024 9:30	0.8	5.0	185	0.2	2.9	198	0.2	1.6	188
12/10/2024 9:00	0.9	4.6	175	0.2	1.8	190	0.2	1.7	174
12/10/2024 8:30	0.8	4.5	168	0.2	2.1	179	0.2	1.6	162
12/10/2024 8:00	0.8	3.7	191	0.2	2.6	197	0.2	1.6	181
12/10/2024 7:30	0.7	4.4	173	0.2	2.1	191	0.2	1.3	187
12/10/2024 7:00	0.6	4.3	168	0.2	2.5	189	0.2	1.4	171
12/10/2024 6:30	0.8	3.7	184	0.2	2.9	197	0.7	1.6	192
12/10/2024 6:00	0.9	4.7	189	0.2	2.7	199	1.2	1.6	189
12/10/2024 5:30	0.9	3.9	191	0.2	2.4	205	0.4	1.5	196
12/10/2024 5:00	0.9	3.8	187	0.2	2.5	199	0.7	1.3	176
12/10/2024 4:30	0.9	4.2	195	0.2	3.3	203	0.6	1.6	202
12/10/2024 4:00	1.0	4.1	194	0.2	2.6	204	2.0	1.1	194
12/10/2024 3:30	1.1	4.4	198	0.2	2.7	209	0.7	1.2	209
12/10/2024 3:00	1.2	4.0	189	1.0	2.1	202	0.8	1.0	200
12/10/2024 2:30	1.5	2.4	180	5.1	0.3	49	0.5	0.4	97
12/10/2024 2:00	1.9	3.1	184	6.6	0.9	283	0.8	0.6	22
12/10/2024 1:30	2.9	2.5	191	0.4	1.1	222	AX	0.6	183
12/10/2024 1:00	7.9	1.0	312	AX	0.3	53	0.2	0.5	349
12/10/2024 0:30	AX	1.1	98	0.2	0.3	346	0.2	0.3	31

30-Minute Avgs
EST Ending @
Date / Time

	Station 1			Station 2			Station 3		
	H2S	MET		H2S	MET		H2S	MET	
	ppb	WS - mph	WD - deg	ppb	WS - mph	WD - deg	ppb	WS - mph	WD - deg
12/10/2024 0:00	2.3	1.9	53	0.2	0.6	28	0.2	0.4	29
12/9/2024 23:30	6.6	1.6	71	0.2	0.5	48	0.2	0.4	6
12/9/2024 23:00	6.2	1.1	4	0.2	0.5	26	0.2	0.4	337
12/9/2024 22:30	1.2	0.7	119	0.2	0.3	69	0.2	0.3	125
12/9/2024 22:00	4.2	1.0	61	0.2	0.3	67	0.2	0.3	125
12/9/2024 21:30	0.8	0.9	64	0.2	0.5	72	0.2	0.4	57
12/9/2024 21:00	0.8	0.8	78	0.2	0.6	59	0.2	0.4	46
12/9/2024 20:30	0.6	1.1	175	0.2	0.6	191	0.2	0.6	262
12/9/2024 20:00	0.6	1.8	161	0.2	0.7	134	0.5	0.7	122
12/9/2024 19:30	0.6	1.5	206	0.2	0.6	190	0.5	0.9	168
12/9/2024 19:00	0.6	2.6	178	0.2	1.4	182	0.2	0.9	189
12/9/2024 18:30	0.6	2.7	190	0.2	1.2	196	0.4	1.2	178
12/9/2024 18:00	0.7	3.2	189	0.2	2.1	207	2.2	1.6	187
12/9/2024 17:30	0.6	4.1	190	0.2	2.3	206	0.5	2.0	198
12/9/2024 17:00	0.6	4.5	179	0.2	3.3	204	0.5	2.6	188
12/9/2024 16:30	0.6	4.2	190	0.2	3.2	212	1.3	1.9	206
12/9/2024 16:00	0.6	4.1	184	0.2	3.7	216	1.1	2.8	200
12/9/2024 15:30	0.5	4.7	188	0.2	3.8	216	1.3	3.0	198
12/9/2024 15:00	0.6	4.3	187	0.2	2.8	209	1.1	1.8	191
12/9/2024 14:30	0.6	3.6	183	0.2	1.9	200	0.9	1.4	172
12/9/2024 14:00	0.6	1.9	180	1.4	1.3	198	0.6	0.7	132
12/9/2024 13:30	0.5	1.8	223	0.6	1.5	224	1.2	0.6	264
12/9/2024 13:00	0.5	5.0	187	1.4	2.1	226	0.5	1.0	203
12/9/2024 12:30	0.5	5.3	234	1.0	2.9	237	0.4	1.8	243
12/9/2024 12:00	0.5	5.7	182	0.2	3.5	215	0.2	2.6	201
12/9/2024 11:30	0.5	4.2	185	0.2	3.0	212	0.2	2.2	186
12/9/2024 11:00	0.5	5.9	171	0.2	2.6	178	0.2	1.7	182
12/9/2024 10:30	0.6	4.1	161	0.2	2.0	158	0.2	1.6	170
12/9/2024 10:00	0.6	3.2	162	0.2	1.4	173	0.2	1.4	153
12/9/2024 9:30	0.5	1.7	131	0.2	0.9	146	0.2	0.8	146
12/9/2024 9:00	0.6	1.1	127	0.2	0.5	140	0.9	0.8	131
12/9/2024 8:30	0.6	1.6	198	0.2	1.1	201	0.6	0.9	185
12/9/2024 8:00	0.5	3.5	186	0.2	1.1	208	0.2	1.2	214
12/9/2024 7:30	0.5	4.5	140	0.2	1.5	130	0.2	1.2	136
12/9/2024 7:00	0.6	4.0	178	0.2	3.0	196	1.1	1.2	184
12/9/2024 6:30	0.5	5.5	196	0.2	4.1	215	1.2	2.3	225
12/9/2024 6:00	0.5	5.2	192	0.2	3.8	209	1.2	1.9	212
12/9/2024 5:30	0.5	6.9	207	1.5	5.2	229	1.2	2.1	218
12/9/2024 5:00	0.5	7.5	209	0.7	5.1	229	1.3	2.7	231
12/9/2024 4:30	0.5	5.5	189	0.2	2.5	203	0.9	1.9	198
12/9/2024 4:00	0.6	3.0	188	0.2	1.1	195	0.6	1.2	169
12/9/2024 3:30	0.6	1.8	202	0.2	0.7	161	0.2	0.7	184
12/9/2024 3:00	0.7	2.0	171	0.2	1.0	155	0.2	1.1	176
12/9/2024 2:30	0.8	3.2	190	0.2	1.3	179	0.2	1.2	186
12/9/2024 2:00	1.1	3.3	206	0.4	0.6	194	0.5	1.0	177
12/9/2024 1:30	1.3	2.3	203	1.2	0.6	243	AX	0.8	171
12/9/2024 1:00	2.0	0.9	225	AX	0.7	231	0.6	0.7	181
12/9/2024 0:30	AX	0.7	226	0.2	0.3	268	0.2	0.6	148

30-Minute Avgs
EST Ending @
Date / Time

	Station 1			Station 2			Station 3		
	H2S	MET		H2S	MET		H2S	MET	
	ppb	WS - mph	WD - deg	ppb	WS - mph	WD - deg	ppb	WS - mph	WD - deg
12/9/2024 0:00	0.2	0.9	216	0.2	0.8	249	0.2	0.8	181
12/8/2024 23:30	0.5	1.1	222	0.2	0.5	295	0.2	0.4	192
12/8/2024 23:00	0.4	0.8	150	0.2	1.1	174	0.2	0.8	188
12/8/2024 22:30	0.2	1.8	185	0.2	1.1	185	0.4	0.7	202
12/8/2024 22:00	0.2	1.9	188	0.2	1.3	178	0.2	0.9	186
12/8/2024 21:30	0.4	2.0	170	0.2	1.3	182	0.4	0.8	205
12/8/2024 21:00	0.2	2.7	192	0.2	1.7	184	1.5	0.8	163
12/8/2024 20:30	0.2	3.6	195	0.2	2.3	207	2.2	1.2	195
12/8/2024 20:00	0.2	4.7	198	0.2	2.6	211	2.7	1.4	209
12/8/2024 19:30	0.2	4.2	203	0.2	2.6	220	0.9	1.5	220
12/8/2024 19:00	0.2	6.1	204	0.2	3.6	222	0.8	2.7	221
12/8/2024 18:30	0.2	5.9	199	0.2	3.7	215	1.9	2.4	205
12/8/2024 18:00	0.2	5.9	201	0.2	3.1	210	1.4	2.3	216
12/8/2024 17:30	0.2	4.6	200	0.6	2.6	222	0.6	2.7	222
12/8/2024 17:00	0.2	7.1	206	0.7	4.5	224	0.7	2.9	230
12/8/2024 16:30	0.2	7.5	207	0.6	5.9	229	0.7	3.0	225
12/8/2024 16:00	0.2	9.1	227	0.6	8.4	235	0.5	3.0	234
12/8/2024 15:30	0.2	10.1	222	0.6	8.6	236	0.2	4.7	231
12/8/2024 15:00	0.2	8.5	221	0.6	7.3	239	0.2	3.0	243
12/8/2024 14:30	0.2	6.5	234	0.6	6.7	244	0.2	4.5	242
12/8/2024 14:00	0.2	7.3	239	0.5	7.3	245	0.2	4.5	239
12/8/2024 13:30	0.2	8.3	224	0.5	6.8	229	0.5	3.4	222
12/8/2024 13:00	0.2	6.9	215	0.4	5.9	231	0.2	2.7	233
12/8/2024 12:30	0.2	6.7	216	0.5	6.4	235	0.2	3.0	231
12/8/2024 12:00	0.4	6.2	227	0.6	6.5	239	0.2	4.4	219
12/8/2024 11:30	0.5	5.5	212	0.6	5.8	241	0.2	2.7	226
12/8/2024 11:00	0.4	4.6	205	0.8	5.0	250	0.2	2.4	224
12/8/2024 10:30	0.2	3.6	233	1.1	4.6	250	0.2	2.2	226
12/8/2024 10:00	0.2	4.2	203	0.6	3.5	224	0.2	2.3	234
12/8/2024 9:30	0.2	3.4	186	0.2	2.8	221	0.6	2.5	222
12/8/2024 9:00	0.2	2.6	181	0.2	1.8	205	1.7	1.4	169
12/8/2024 8:30	0.2	3.1	195	0.2	2.1	212	1.5	1.1	178
12/8/2024 8:00	0.2	3.8	193	0.2	2.8	198	2.5	1.7	198
12/8/2024 7:30	0.2	3.2	192	0.2	2.3	194	2.1	1.3	205
12/8/2024 7:00	0.2	2.7	195	0.2	1.6	195	1.8	0.8	165
12/8/2024 6:30	0.2	3.8	205	2.1	2.8	214	1.3	1.2	185
12/8/2024 6:00	0.2	0.8	121	0.2	1.9	208	1.2	0.7	181
12/8/2024 5:30	0.2	0.2	64	0.2	1.9	205	0.9	1.0	190
12/8/2024 5:00	0.2	2.4	148	0.6	1.0	192	1.2	0.9	207
12/8/2024 4:30	0.5	3.1	166	0.2	1.3	152	1.8	0.6	76
12/8/2024 4:00	0.5	2.3	204	2.5	1.6	187	2.1	0.6	95
12/8/2024 3:30	0.6	2.0	207	7.1	1.9	240	2.3	0.7	199
12/8/2024 3:00	0.8	3.0	213	5.8	1.9	215	2.2	0.6	185
12/8/2024 2:30	1.1	2.9	214	0.9	1.2	210	3.1	1.2	193
12/8/2024 2:00	1.9	2.1	211	2.1	0.6	231	BF	1.1	190
12/8/2024 1:30	3.3	2.8	208	BF	1.1	186	BF	2.0	177
12/8/2024 1:00	BF	2.0	247	BF	1.1	84	0.2	1.3	155
12/8/2024 0:30	BF	3.8	223	1.9	1.3	60	0.9	1.8	159

30-Minute Avgs
EST Ending @
Date / Time

	Station 1			Station 2			Station 3		
	H2S	MET		H2S	MET		H2S	MET	
	ppb	WS - mph	WD - deg	ppb	WS - mph	WD - deg	ppb	WS - mph	WD - deg
12/8/2024 0:00	0.2	4.8	211	0.6	0.8	73	0.8	1.0	147
12/7/2024 23:30	0.2	3.1	210	0.6	1.0	59	1.1	0.9	140
12/7/2024 23:00	0.2	4.3	213	0.2	0.4	71	1.2	0.8	128
12/7/2024 22:30	0.2	2.6	213	0.2	0.3	63	1.0	0.3	124
12/7/2024 22:00	0.2	3.1	213	0.5	0.2	219	0.5	0.4	109
12/7/2024 21:30	0.2	3.0	209	1.2	0.2	227	1.1	0.3	130
12/7/2024 21:00	0.2	2.5	217	3.2	0.3	270	2.1	0.2	88
12/7/2024 20:30	0.2	1.9	193	3.3	0.4	295	1.9	0.3	34
12/7/2024 20:00	0.2	1.7	202	3.0	0.2	79	1.6	0.3	76
12/7/2024 19:30	0.2	1.7	195	3.6	0.3	99	1.7	0.3	126
12/7/2024 19:00	0.2	2.4	220	7.9	0.8	206	2.1	0.5	132
12/7/2024 18:30	0.2	2.8	217	0.8	0.9	223	1.2	0.6	206
12/7/2024 18:00	0.2	2.2	199	0.2	0.6	213	1.6	0.5	195
12/7/2024 17:30	0.2	3.6	189	0.2	2.0	202	0.9	0.6	244
12/7/2024 17:00	0.2	4.8	194	0.2	3.4	214	0.7	1.3	232
12/7/2024 16:30	0.2	5.6	197	0.2	3.8	219	0.4	2.3	221
12/7/2024 16:00	0.2	5.4	198	0.2	4.5	230	0.2	2.5	206
12/7/2024 15:30	0.2	6.7	212	0.2	5.3	228	0.2	3.0	221
12/7/2024 15:00	0.2	7.1	197	0.2	5.9	221	0.2	3.5	203
12/7/2024 14:30	0.2	5.5	200	0.2	6.0	235	0.2	4.1	206
12/7/2024 14:00	0.2	6.6	199	0.2	4.8	216	0.2	3.8	202
12/7/2024 13:30	0.2	6.0	196	0.2	4.6	223	0.2	3.7	192
12/7/2024 13:00	0.2	4.3	212	0.2	4.7	243	0.2	2.9	193
12/7/2024 12:30	0.2	4.9	231	0.2	4.8	226	0.2	2.7	214
12/7/2024 12:00	0.2	5.7	206	0.2	4.2	217	0.2	2.9	210
12/7/2024 11:30	0.2	4.9	189	0.2	4.1	234	0.2	3.5	184
12/7/2024 11:00	0.2	4.7	165	0.4	3.6	239	0.2	2.4	191
12/7/2024 10:30	0.4	1.8	223	1.7	2.0	244	0.9	1.7	203
12/7/2024 10:00	0.6	1.7	190	0.4	1.1	256	0.8	1.6	183
12/7/2024 9:30	1.0	1.6	203	0.2	0.7	273	0.2	1.1	184
12/7/2024 9:00	1.3	0.9	189	0.2	0.7	277	0.2	0.9	194
12/7/2024 8:30	1.4	0.9	181	0.2	0.3	319	0.2	0.3	67
12/7/2024 8:00	2.1	1.0	156	0.2	0.5	30	0.2	0.4	95
12/7/2024 7:30	2.7	0.9	45	0.2	0.8	43	0.2	0.4	24
12/7/2024 7:00	2.7	0.6	124	0.2	0.7	10	0.2	0.4	288
12/7/2024 6:30	2.6	0.7	155	0.2	0.7	30	0.2	0.4	359
12/7/2024 6:00	3.2	0.8	90	0.2	0.5	43	0.2	0.6	329
12/7/2024 5:30	2.0	1.6	40	0.2	1.0	37	0.2	0.3	28
12/7/2024 5:00	1.3	1.0	141	0.2	1.6	40	0.2	0.8	52
12/7/2024 4:30	1.3	1.3	170	0.2	0.9	26	0.2	0.6	29
12/7/2024 4:00	2.4	1.6	185	0.2	0.7	338	0.2	0.6	294
12/7/2024 3:30	4.8	1.0	68	0.2	0.4	31	0.2	0.3	299
12/7/2024 3:00	1.2	2.9	46	0.2	1.6	36	0.2	0.7	360
12/7/2024 2:30	1.1	0.5	131	0.2	1.1	25	0.2	0.8	1
12/7/2024 2:00	1.3	1.1	167	0.4	0.7	14	0.6	0.3	345
12/7/2024 1:30	2.0	1.3	167	0.7	0.3	26	AX	0.3	324
12/7/2024 1:00	4.3	0.7	123	AX	1.0	350	0.2	0.2	270
12/7/2024 0:30	AX	1.3	47	0.2	0.6	290	0.2	0.3	294

30-Minute Avgs
EST Ending @
Date / Time

	Station 1			Station 2			Station 3		
	H2S	MET		H2S	MET		H2S	MET	
	ppb	WS - mph	WD - deg	ppb	WS - mph	WD - deg	ppb	WS - mph	WD - deg
12/7/2024 0:00	1.9	4.1	44	0.2	1.1	50	0.4	0.8	33
12/6/2024 23:30	0.5	1.2	72	0.2	1.4	44	0.5	0.8	6
12/6/2024 23:00	0.4	1.1	108	0.2	0.9	31	0.5	0.6	356
12/6/2024 22:30	0.2	1.2	165	0.6	0.4	10	0.5	0.4	328
12/6/2024 22:00	0.2	0.7	170	1.4	0.9	15	0.2	0.4	52
12/6/2024 21:30	0.2	1.5	168	1.1	0.5	347	1.1	0.2	28
12/6/2024 21:00	0.2	2.3	179	3.8	0.7	236	0.8	0.4	241
12/6/2024 20:30	0.2	2.0	178	2.0	0.4	283	0.4	0.3	271
12/6/2024 20:00	0.2	1.7	182	0.2	0.5	301	0.2	0.5	259
12/6/2024 19:30	0.2	1.8	186	0.2	0.4	335	0.2	0.5	285
12/6/2024 19:00	0.2	0.8	179	0.4	0.8	19	0.2	0.4	313
12/6/2024 18:30	0.2	1.3	171	0.2	0.6	318	0.2	0.3	271
12/6/2024 18:00	0.2	1.9	181	0.2	0.4	21	0.2	0.3	260
12/6/2024 17:30	0.4	2.7	299	0.2	1.1	356	0.2	0.4	230
12/6/2024 17:00	0.2	5.5	320	0.2	2.2	311	0.2	0.4	241
12/6/2024 16:30	0.2	6.1	333	0.2	3.2	310	0.2	1.5	307
12/6/2024 16:00	0.2	7.5	322	0.2	4.3	313	0.2	1.8	340
12/6/2024 15:30	0.2	8.5	318	0.2	4.6	329	0.2	1.8	333
12/6/2024 15:00	0.2	5.8	331	0.2	4.6	306	0.2	1.8	333
12/6/2024 14:30	0.2	7.6	5	0.2	4.4	336	0.2	2.8	356
12/6/2024 14:00	0.2	7.8	343	0.2	4.8	326	0.2	1.9	330
12/6/2024 13:30	0.4	9.1	8	0.2	4.6	343	0.2	2.7	343
12/6/2024 13:00	0.4	9.6	10	0.2	4.5	350	0.2	3.8	2
12/6/2024 12:30	0.4	8.4	355	0.2	4.2	9	0.2	4.1	13
12/6/2024 12:00	0.2	8.4	11	0.2	4.5	326	0.2	3.4	1
12/6/2024 11:30	0.2	7.9	348	0.2	4.0	348	0.2	2.7	349
12/6/2024 11:00	0.2	9.3	346	0.2	4.0	359	0.2	3.0	6
12/6/2024 10:30	0.5	7.9	354	0.2	3.0	350	0.2	2.4	2
12/6/2024 10:00	0.2	9.2	15	0.2	4.9	18	0.2	4.0	1
12/6/2024 9:30	0.5	10.1	17	0.2	4.8	5	0.2	4.5	7
12/6/2024 9:00	0.7	10.1	15	0.2	4.2	8	0.2	3.7	5
12/6/2024 8:30	1.0	8.1	11	0.2	2.7	360	0.2	4.1	354
12/6/2024 8:00	1.2	7.3	11	0.2	0.9	24	0.2	3.0	352
12/6/2024 7:30	1.5	7.0	12	0.2	1.0	54	0.2	2.4	1
12/6/2024 7:00	1.2	6.8	14	0.2	1.4	46	0.2	2.2	4
12/6/2024 6:30	0.9	9.0	20	0.2	2.1	36	0.2	2.7	11
12/6/2024 6:00	1.0	6.1	26	0.2	2.0	39	0.2	3.1	10
12/6/2024 5:30	0.9	9.9	20	0.2	2.6	26	0.2	2.9	14
12/6/2024 5:00	0.7	11.5	20	0.2	2.8	29	0.2	3.7	13
12/6/2024 4:30	0.7	12.9	20	0.2	2.8	33	0.2	4.4	17
12/6/2024 4:00	0.7	14.4	19	0.2	3.5	29	0.2	4.5	17
12/6/2024 3:30	0.9	12.1	21	0.2	3.4	31	0.2	4.5	18
12/6/2024 3:00	0.8	12.2	19	0.2	2.3	41	0.2	4.0	14
12/6/2024 2:30	1.1	11.7	17	0.2	1.9	43	0.2	3.3	11
12/6/2024 2:00	1.7	11.3	19	0.2	2.9	40	0.4	4.4	11
12/6/2024 1:30	1.8	11.5	17	0.5	3.2	34	AX	4.4	10
12/6/2024 1:00	2.9	12.2	18	AX	3.1	29	0.2	4.1	12
12/6/2024 0:30	AX	13.5	15	0.2	4.6	24	0.2	5.0	9

AQS Null Data Codes	
Qualifier Code	Item Description
AB	TECHNICIAN UNAVAILABLE
AC	CONSTRUCTION/REPAIRS IN AREA
AD	SHELTER STORM DAMAGE
AE	SHELTER TEMPERATURE OUTSIDE LIMITS
AI	INSUFFICIENT DATA (CAN'T CALCULATE)
AM	MISCELLANEOUS VOID
AN	MACHINE MALFUNCTION
AO	BAD WEATHER
AP	VANDALISM
AS	POOR QUALITY ASSURANCE RESULTS
AT	CALIBRATION
AU	MONITORING WAIVED
AV	POWER FAILURE (POWR)
AW	WILDLIFE DAMAGE
AX	PRECISION CHECK (PREC)
AY	Q C CONTROL POINTS (ZERO/SPAN)
BA	MAINTENANCE/ROUTINE REPAIRS
BB	UNABLE TO REACH SITE
BC	MULTI-POINT CALIBRATION
BD	AUTO CALIBRATION
BE	BUILDING/SITE REPAIR
BF	PRECISION/ZERO/SPAN
BJ	OPERATOR ERROR
BK	SITE COMPUTER/DATA LOGGER DOWN
BL	Q C AUDIT (AUDT)
EC	EXCEED CRITICAL CRITERIA