

Since monitored concentrations have remained well below established guidelines and New Indy must continue to report results from their required monitoring, DHEC will suspend facility boundary Hydrogen Sulfide monitoring and daily reporting in the fourth quarter of 2023. Monitoring may resume if there is an increase in on-site monitored concentrations or a significant change in operations associated with potential odor sources.

Air Monitoring Summary Tables

This table summarizes monitoring data collected using DHEC monitors and EPA's Viper wireless remote monitoring system.

Project Name: H₂S in South Carolina



From: 10/14/23

12:00 AM

EDT

To: 10/14/23

11:59 PM

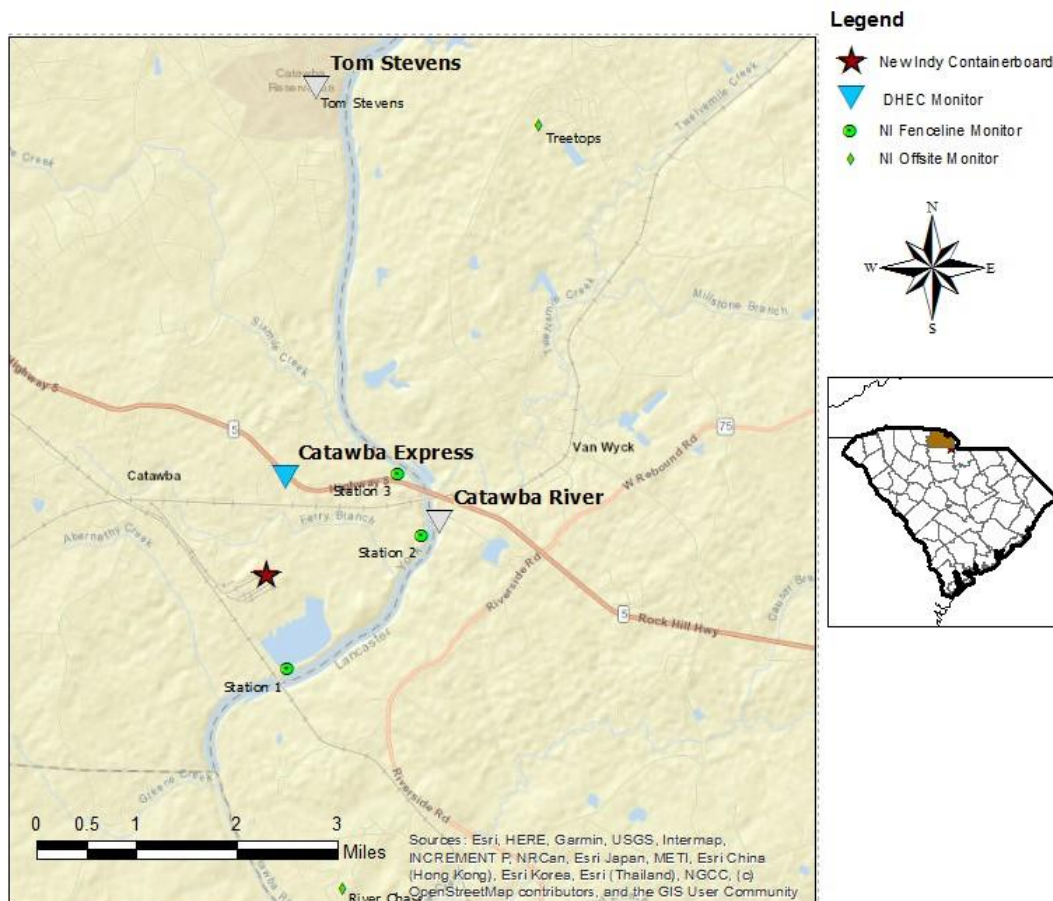
EDT

Catawba Express							
Instrument	Analyte	ATSDR MRL Exceedance?	Number of Readings	Number of Detections	Concentration Range	Period Average	ATSDR MRL
SPM Flex 2	H ₂ S	No	2880	105	0 - 5 ppb	0.13 ppb	70 ppb

Notes:

Hydrogen sulfide concentrations presented in this data summary table are converted from parts per million, the instrument readout units, to parts per billion. The SPM FLEX Minimum Detectable Limit (MDL) is 1 ppb of Hydrogen Sulfide.

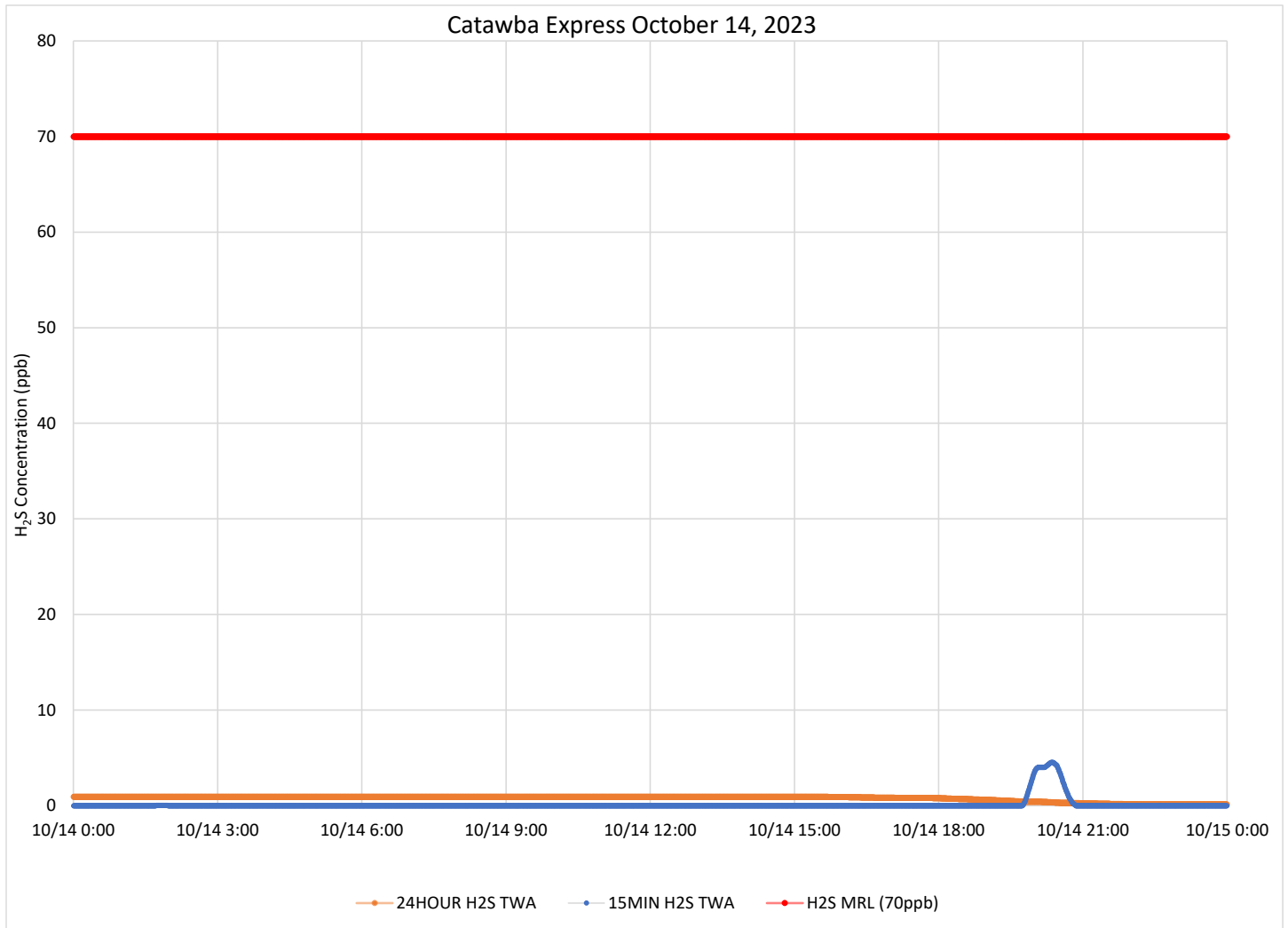
ATSDR MRL	Agency for Toxic Substances and Disease Registry Minimal Risk Level - Acute Exposure (<14 days)
H ₂ S	Hydrogen Sulfide
hr	Hour
ppb	Parts per billion
MRL Exceedance	Defines if the 24-hr TWA exceeded the MRL at any time during the period of this report
SPM	Single Point Monitor
TWA	Time Weighted Average



H₂S in South Carolina

Hydrogen Sulfide 15-min and 24-hr Time Weighted Average Graphs

Winds were generally from the northeast through west except for several hours in the early evening when there were several hours of a southwesterly breeze.



Notes: Time is Eastern Daylight Time H₂S – Hydrogen Sulfide MRL – Minimal Risk Level ppb – Parts per billion Wind data for KUZA