

The Catawba Express monitor was replaced approximately noon on the 18th. Summary data only reflects the period after resumption of monitoring.

Air Monitoring Summary Tables

This table summarizes monitoring data collected using DHEC monitors and EPA's Viper wireless remote monitoring system.

Project Name: H₂S in South Carolina



From: 1/18/23
12:00 AM

To: 1/18/23
11:59 PM

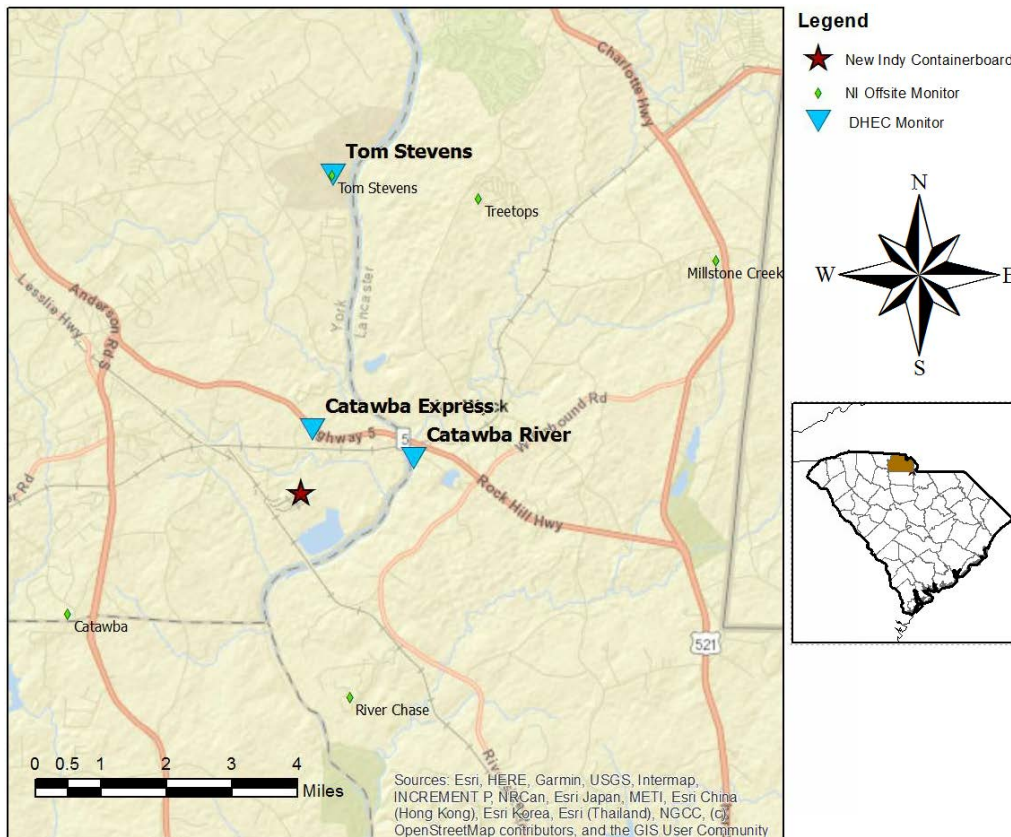
Catawba River							
Instrument	Analyte	ATSDR MRL Exceedance?	Number of Readings	Number of Detections	Concentration Range	Period Average	ATSDR MRL
SPM Flex 3	H2S	No	2880	1368	0 - 9 ppb	1.01 ppb	70 ppb

Catawba Express 1212-2399							
Instrument	Analyte	ATSDR MRL Exceedance?	Number of Readings	Number of Detections	Concentration Range	Partial Period Average	ATSDR MRL
SPM Flex 2	H2S	No	1414	264	0 - 4 ppb	0.39 ppb	70 ppb

Notes:

Hydrogen sulfide concentrations presented in this data summary table are converted from parts per million, the instrument readout units, to parts per billion. The SPM FLEX Minimum Detectable Limit (MDL) is 1 ppb of Hydrogen Sulfide.

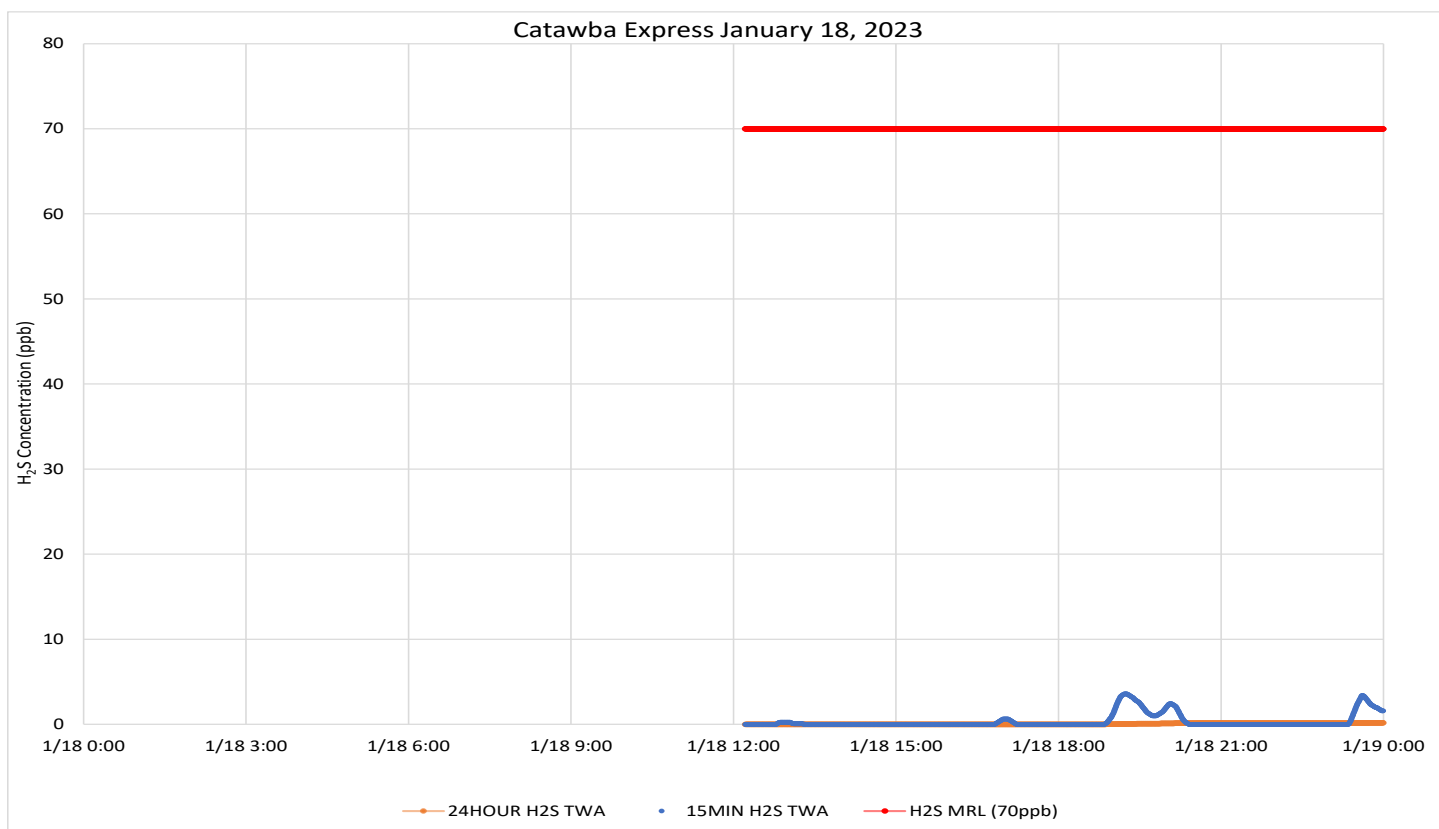
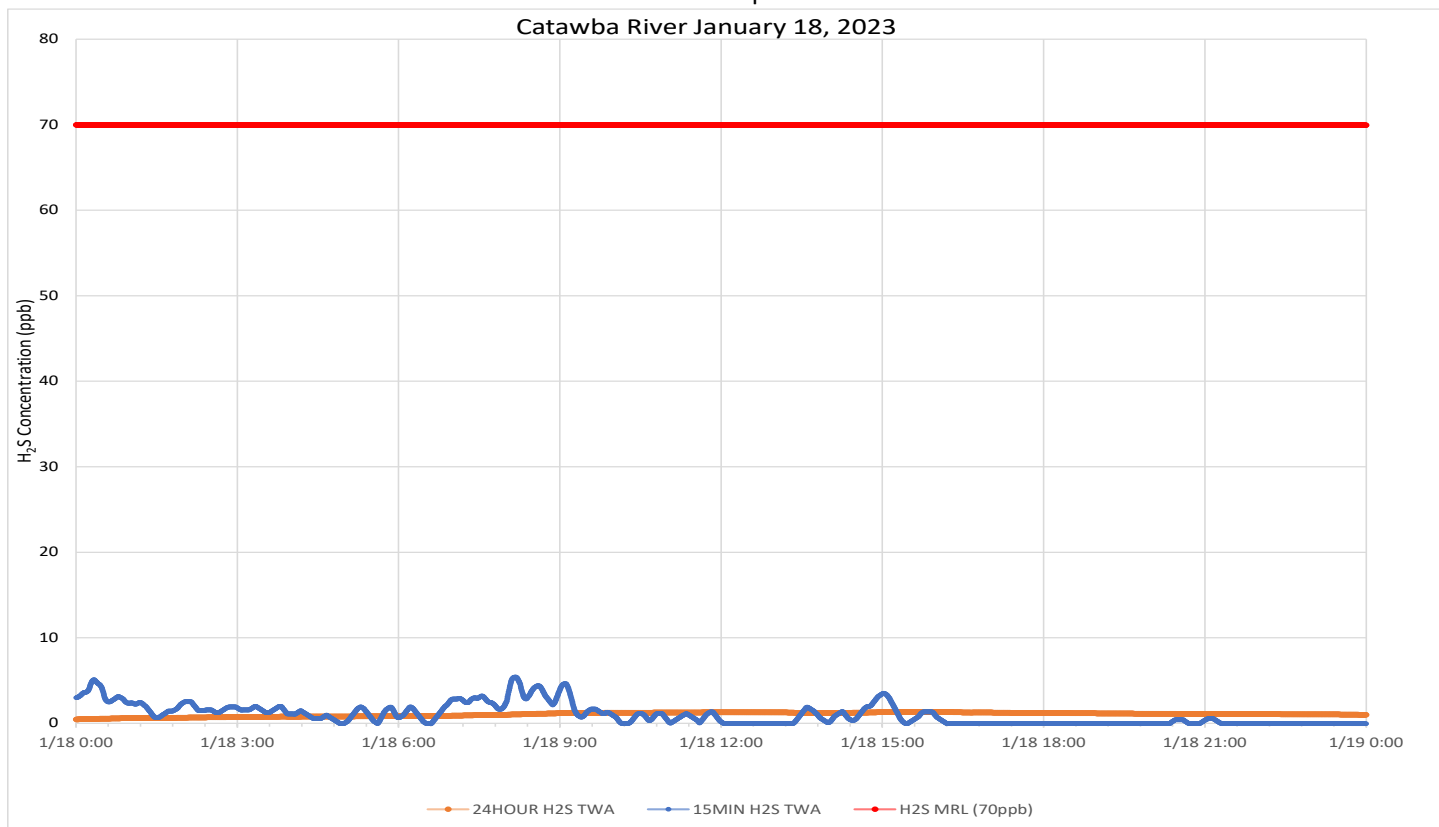
ATSDR MRL	Agency for Toxic Substances and Disease Registry Minimal Risk Level - Acute Exposure (<14 days)
H ₂ S	Hydrogen Sulfide
hr	Hour
ppb	Parts per billion
MRL Exceedance	Defines if the 24-hr TWA exceeded the MRL at any time during the period of this report
SPM	Single Point Monitor
TWA	Time Weighted Average



H₂S in South Carolina

Hydrogen Sulfide 15-min and 24-hr Time Weighted Average Graphs

Winds were from the west to south southwest throughout the period, trending from more westerly early, to more southerly later in the period.



Notes: Time is Eastern Standard Time H₂S – Hydrogen Sulfide MRL – Minimal Risk Level ppb – Parts per billion