

Communication with the Catawba River site was restored for several hours during this reporting period. Short interruptions were also observed in the data from the other two sites. The 24-hour averages provided for Tom Stevens and Catawba Express data are valid for the day. If the unreported data is recovered, this report will be reissued.

Air Monitoring Summary Tables

This table summarizes monitoring data collected using DHEC monitors and EPA's Viper wireless remote monitoring system.

Project Name: H₂S in South Carolina



From: 3/4/22
12:00 AM

To: 3/4/22
11:59 PM

Tom Stevens Rd							
Instrument	Analyte	ATSDR MRL Exceedance?	Number of Readings	Number of Detections	Concentration Range	Period Average	ATSDR MRL
SPM Flex 1	H ₂ S	No	2873	0	0 - 0 ppb	0 ppb	70 ppb

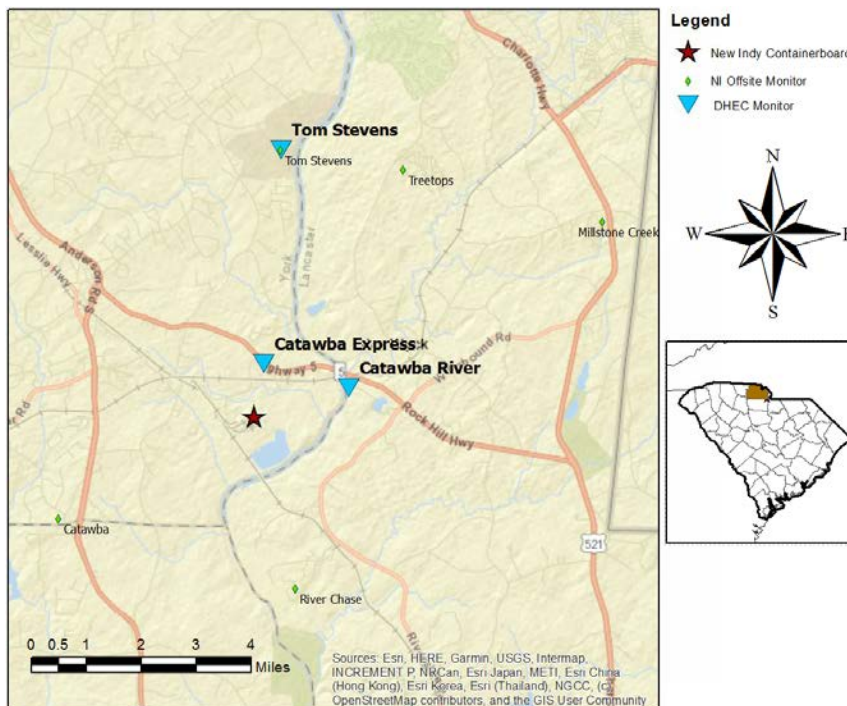
Catawba River 0944-1549							
Instrument	Analyte	ATSDR MRL Exceedance?	Number of Readings	Number of Detections	Concentration Range	Limited Period Average	ATSDR MRL
SPM Flex 3	H ₂ S	No	730	0	0 - 0 ppb	0 ppb	70 ppb

Catawba Express							
Instrument	Analyte	ATSDR MRL Exceedance?	Number of Readings	Number of Detections	Concentration Range	Period Average	ATSDR MRL
SPM Flex 2	H ₂ S	No	2776	1	0 - 1 ppb	0 ppb	70 ppb

Notes:

Hydrogen sulfide concentrations presented in this data summary table are converted from parts per million, the instrument readout units, to parts per billion. The SPM FLEX Minimum Detectable Limit (MDL) is 1 ppb of Hydrogen Sulfide.

ATSDR MRL	Agency for Toxic Substances and Disease Registry Minimal Risk Level - Acute Exposure (<14 days)
H ₂ S	Hydrogen Sulfide
hr	Hour
ppb	Parts per billion
MRL Exceedance	Defines if the 24-hr TWA exceeded the MRL at any time during the period of this report
SPM	Single Point Monitor
TWA	Time Weighted Average



H₂S in South Carolina

Hydrogen Sulfide 15-min and 24-hr Time Weighted Average Graphs

There winds were from the north northeast to east through noon , becoming more variable and light to calm over the remainder of the period.



Notes: Time is Eastern Standard Time H₂S – Hydrogen Sulfide MRL – Minimal Risk Level ppb – Parts per billion