

Communication with the Catawba River site was restored for several hours during this reporting period. Short gaps were also observed in the data from the other two sites. Except for Catawba River, the 24-hour averages provided are valid for the day. If the unreported data is recovered, this report will be reissued.

Air Monitoring Summary Tables

This table summarizes monitoring data collected using DHEC monitors and EPA's Viper wireless remote monitoring system.

Project Name: H₂S in South Carolina



From: 3/3/22
12:00 AM

To: 3/3/22
11:59 PM

Tom Stevens Rd							
Instrument	Analyte	ATSDR MRL Exceedance?	Number of Readings	Number of Detections	Concentration Range	Period Average	ATSDR MRL
SPM Flex 1	H ₂ S	No	2833	382	0 - 4 ppb	0.19 ppb	70 ppb

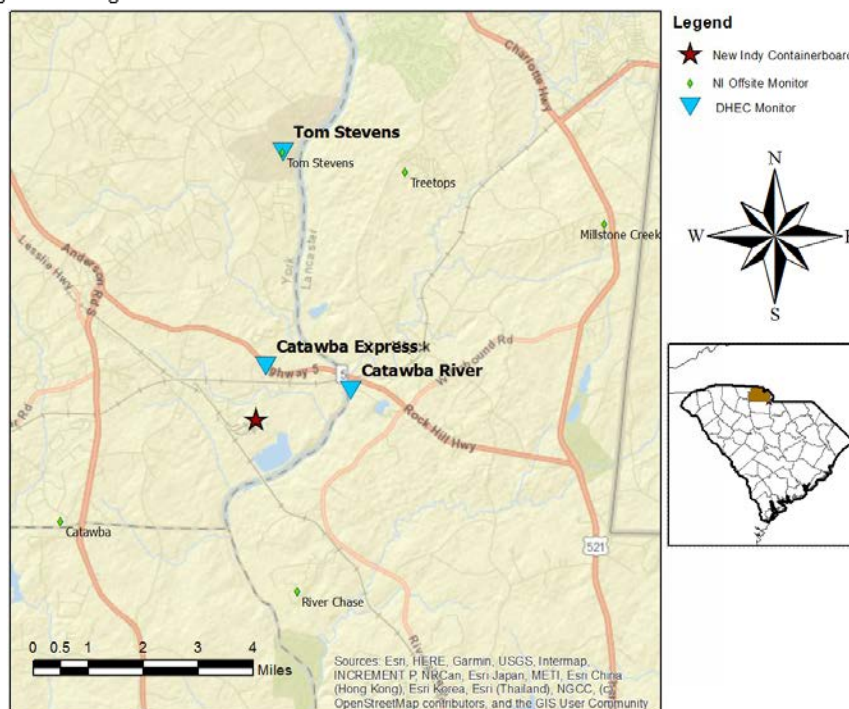
Catawba River 0931-1322							
Instrument	Analyte	ATSDR MRL Exceedance?	Number of Readings	Number of Detections	Concentration Range	Limited Period Average	ATSDR MRL
SPM Flex 3	H ₂ S	No	464	158	0 - 2 ppb	0.56 ppb	70 ppb

Catawba Express							
Instrument	Analyte	ATSDR MRL Exceedance?	Number of Readings	Number of Detections	Concentration Range	Period Average	ATSDR MRL
SPM Flex 2	H ₂ S	No	2802	1365	0 - 12 ppb	2.01 ppb	70 ppb

Notes:

Hydrogen sulfide concentrations presented in this data summary table are converted from parts per million, the instrument readout units, to parts per billion. The SPM FLEX Minimum Detectable Limit (MDL) is 1 ppb of Hydrogen Sulfide.

ATSDR MRL	Agency for Toxic Substances and Disease Registry Minimal Risk Level - Acute Exposure (<14 days)
H ₂ S	Hydrogen Sulfide
hr	Hour
ppb	Parts per billion
MRL Exceedance	Defines if the 24-hr TWA exceeded the MRL at any time during the period of this report
SPM	Single Point Monitor
TWA	Time Weighted Average



H₂S in South Carolina

Hydrogen Sulfide 15-min and 24-hr Time Weighted Average Graphs

There were calm periods throughout the day. When detected, winds were from the south southwest to west, with an indication of a shift to more northerly winds in the late evening.



Notes: Time is Eastern Standard Time H₂S – Hydrogen Sulfide MRL – Minimal Risk Level ppb – Parts per billion