

Data was not transmitted from the Catawba Express monitoring site for approximately one hour after midnight. The data gap is indicated on the graph. If the data is recovered, this report will be reissued. The reported 24-hour period average is valid.

Air Monitoring Summary Tables

This table summarizes monitoring data collected using DHEC monitors and EPA's Viper wireless remote monitoring system.

Project Name: H₂S in South Carolina



From: 1/14/22
12:00 AM

To: 1/14/22
11:59 PM

Tom Stevens Rd							
Instrument	Analyte	ATSDR MRL Exceedance?	Number of Readings	Number of Detections	Concentration Range	Period Average	ATSDR MRL
SPM Flex 1	H ₂ S	No	2880	0	0 - 0 ppb	0 ppb	70 ppb

Catawba River Partial Day 1150-2359							
Instrument	Analyte	ATSDR MRL Exceedance?	Number of Readings	Number of Detections	Concentration Range	Period Average	ATSDR MRL
SPM Flex 3	H ₂ S	No	2880	9	0 - 1 ppb	0 ppb	70 ppb

Catawba Express							
Instrument	Analyte	ATSDR MRL Exceedance?	Number of Readings	Number of Detections	Concentration Range	Period Average	ATSDR MRL
SPM Flex 2	H ₂ S	No	2770	0	0 - 0 ppb	0 ppb	70 ppb

Notes:

Hydrogen sulfide concentrations presented in this data summary table are converted from parts per million, the instrument readout units, to parts per billion.

ATSDR MRL Agency for Toxic Substances and Disease Registry Minimal Risk Level - Acute Exposure (<14 days)

H₂S Hydrogen Sulfide

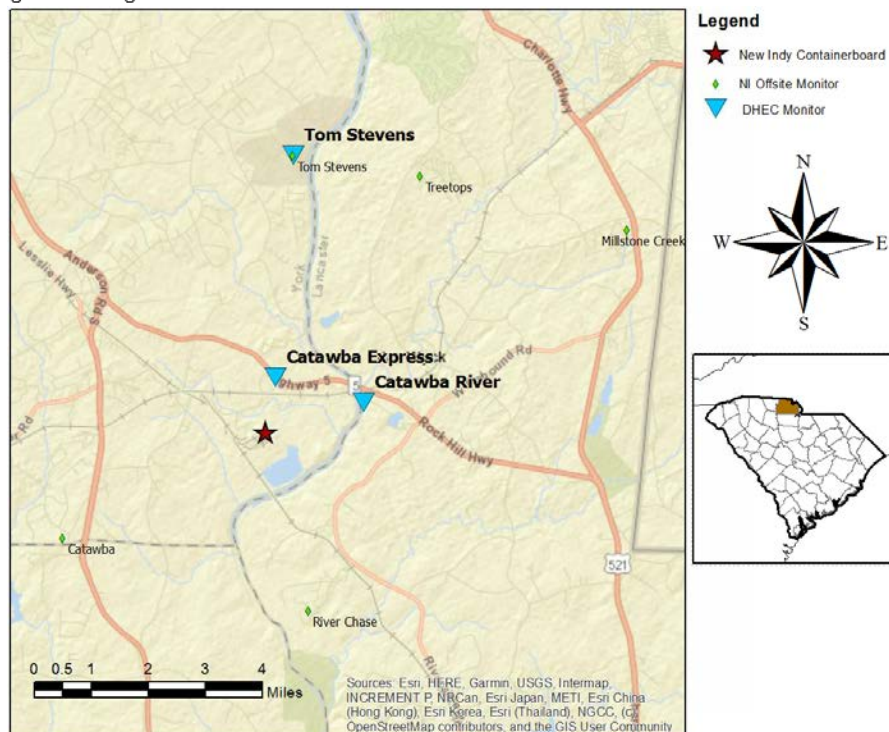
hr Hour

ppb Parts per billion

MRL Exceedance Defines if the 24-hr TWA exceeded the MRL at any time during the period of this report

SPM Single Point Monitor

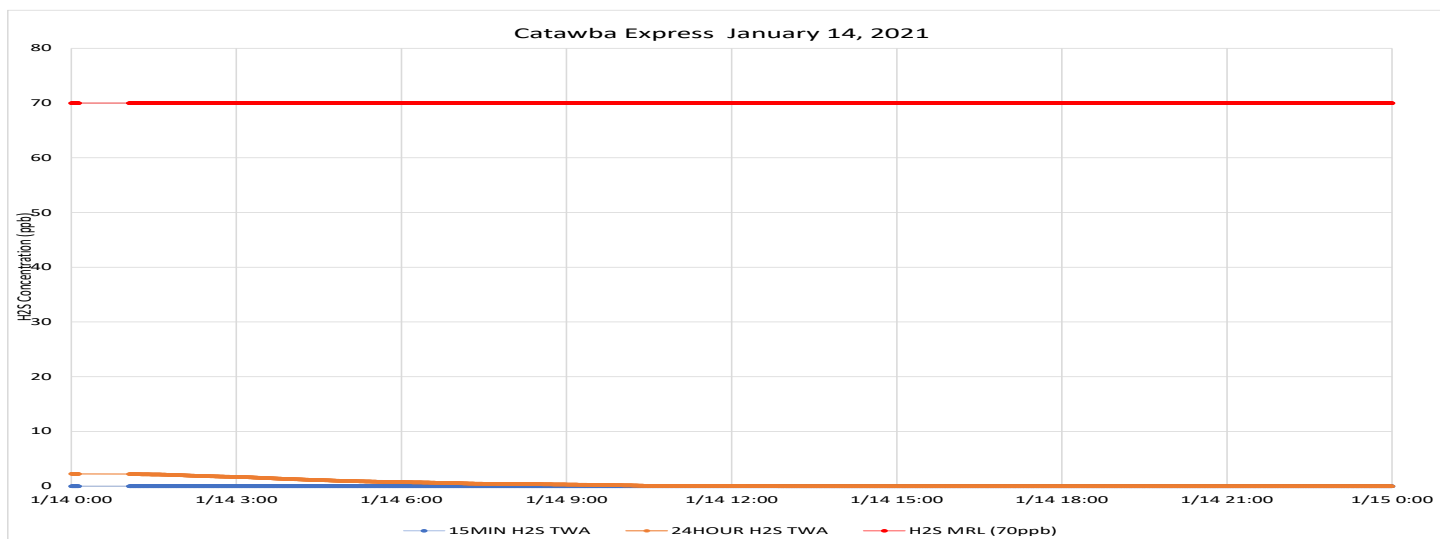
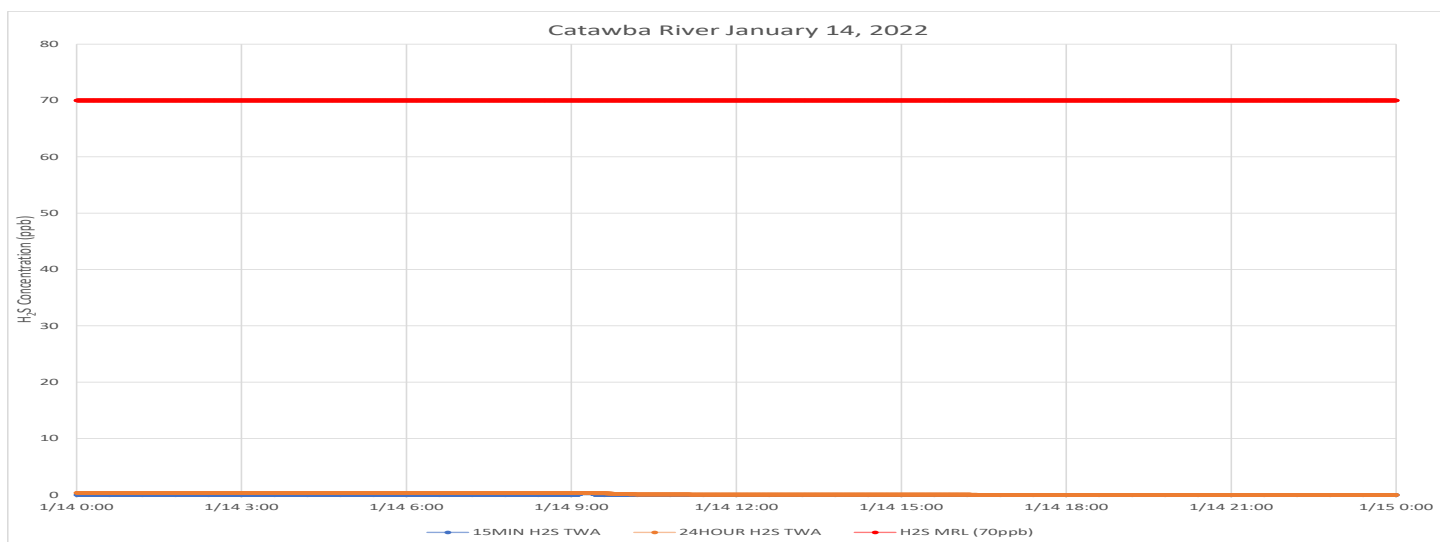
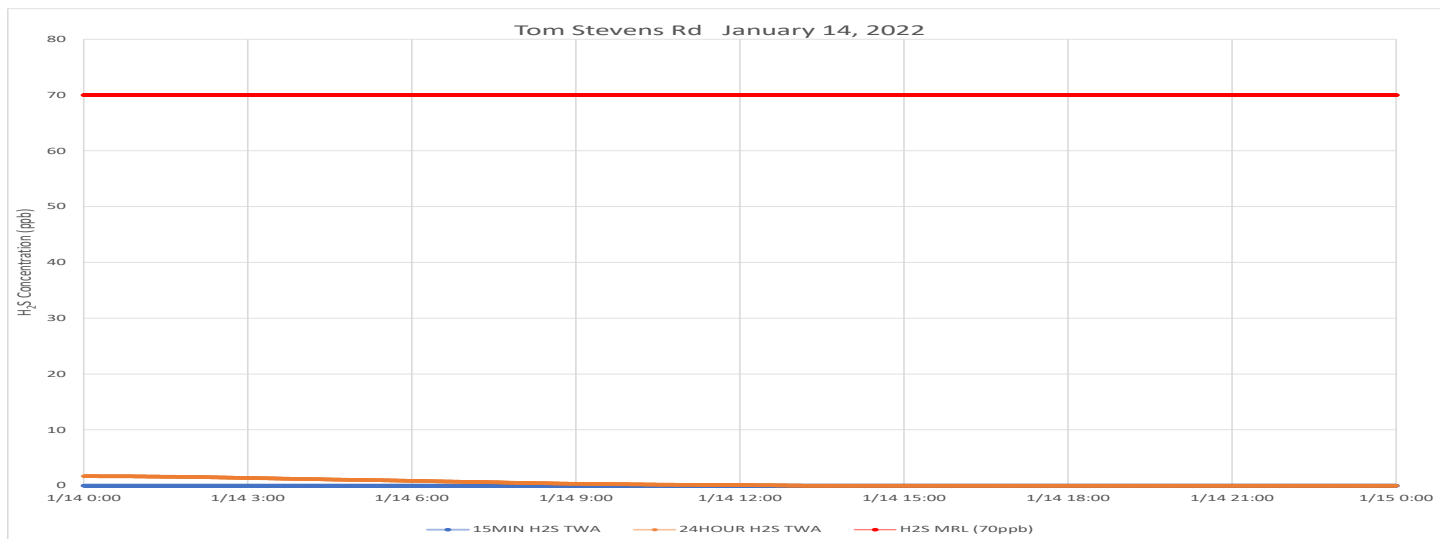
TWA Time Weighted Average



H₂S in South Carolina

Hydrogen Sulfide 15-min and 24-hr Time Weighted Average Graphs

Winds were calm during several periods during the day but were generally coming from the north northwest to north northeast throughout the period.



Notes: Time is Eastern Standard Time H₂S – Hydrogen Sulfide MRL – Minimal Risk Level ppb – Parts per billion