

Air Monitoring Summary Tables

The table below summarizes monitoring data collected using a portable wireless remote monitoring system.
All times in Easter Standard Time (EST).

From: 10/19/21 12:00 am

To: 10/19/21

11:59 pm

Offsite Monitors

Instrument	Analyte	ATSDR MRL 14-day Avg Reached?	Concentration Range Detected ^a	24-hr Average ^a	7-day Average	ATSDR 14-day MRL
Catawba Headstart						
Acrulog PPB	H ₂ S	No	0 – 1 ppb	0.06 ppb	0.10 ppb	70 ppb
Treetops						
Acrulog PPB	H ₂ S	No	0 – 3 ppb	0.08 ppb	0.06 ppb	70 ppb
Liberty Hill						
Acrulog PPB	H ₂ S	No	0 – 4 ppb	0.21 ppb	0.33 ppb	70 ppb
Riverchase Estates						
Acrulog PPB	H ₂ S	No	0 – 3 ppb	0.23 ppb	0.22 ppb	70 ppb
Millstone Creek						
Acrulog PPB	H ₂ S	No	0 – 3 ppb	0.15 ppb	0.09 ppb	70 ppb

^a Based on 30-minute averages.

Onsite Fenceline Monitors

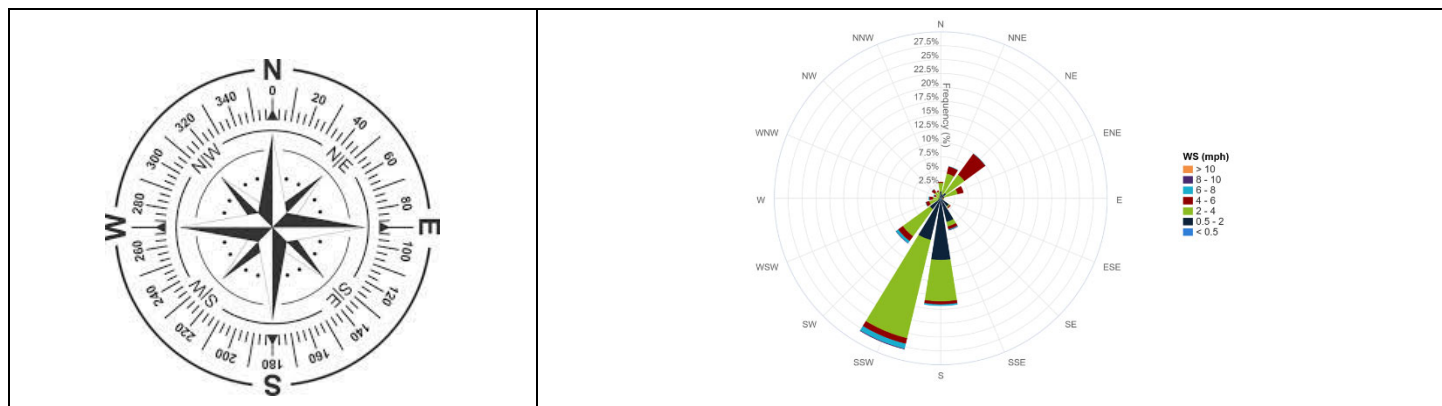
Instrument	Analyte	30-min AEGL Reached?	Concentration Range Detected ^b	24-hr Average ^b	7-day Average	30-min AEGL
Station 1						
TAPI Analyzer	H ₂ S	No	1 – 28 ppb	4.44 ppb	4.17 ppb	600 ppb
Station 2						
TAPI Analyzer	H ₂ S	No	0 – 11 ppb	1.81 ppb	1.27 ppb	600 ppb
Station 3						
TAPI Analyzer	H ₂ S	No	0 – 4 ppb	1.38 ppb	1.14 ppb	600 ppb

^b Based on 30-minute averages.

Notes:

ATSDR MRL	Agency for Toxic Substances and Disease Registry Minimal Risk Level (MRL)
AEGL	EPA Acute Exposure Guidelines Levels
H ₂ S	Hydrogen Sulfide
TAPI	Teledyne API H ₂ S Analyzer
hr	Hour
min	Minute
ppb	Parts per billion
MRL Limit	Limit defined as a 14-day average value.

Wind rose – Shows the direction the wind is coming from, the monitoring station being at the center of the rose.





Legend



Offsite Fixed Monitoring Locations



Onsite Fixed Monitoring Locations



New-Indy Catawba

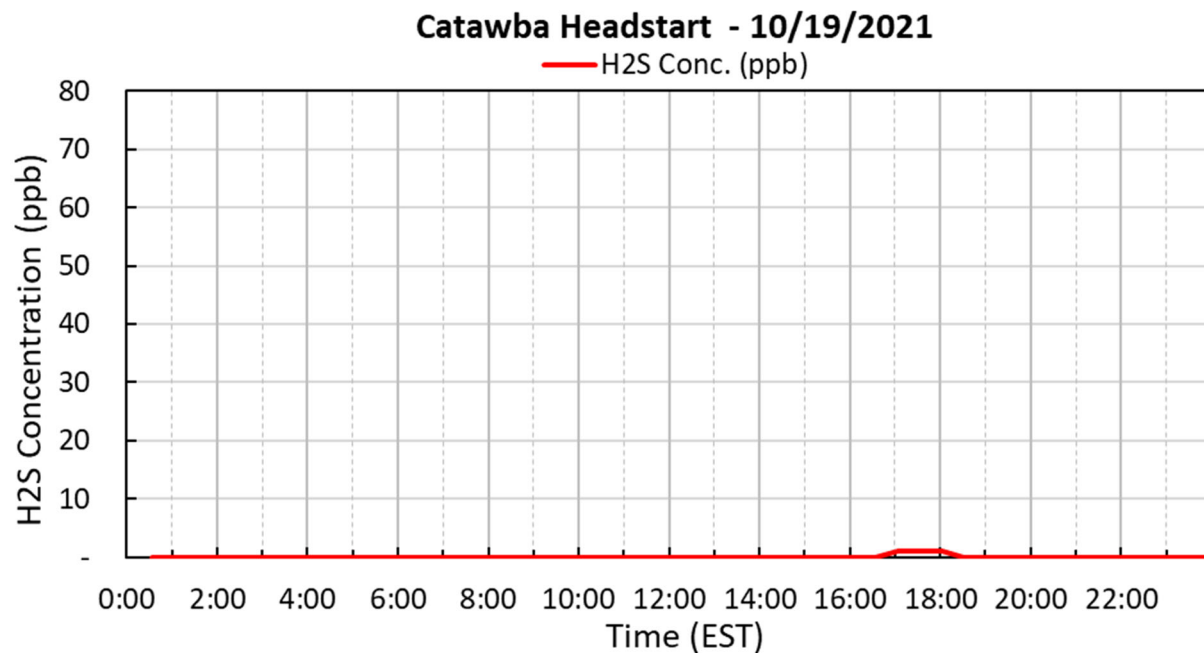
Period H₂S Monitoring Hydrogen Sulfide Offsite Monitors

Below are graphs for offsite locations where hydrogen sulfide (H₂S) was detected during the current reporting period.

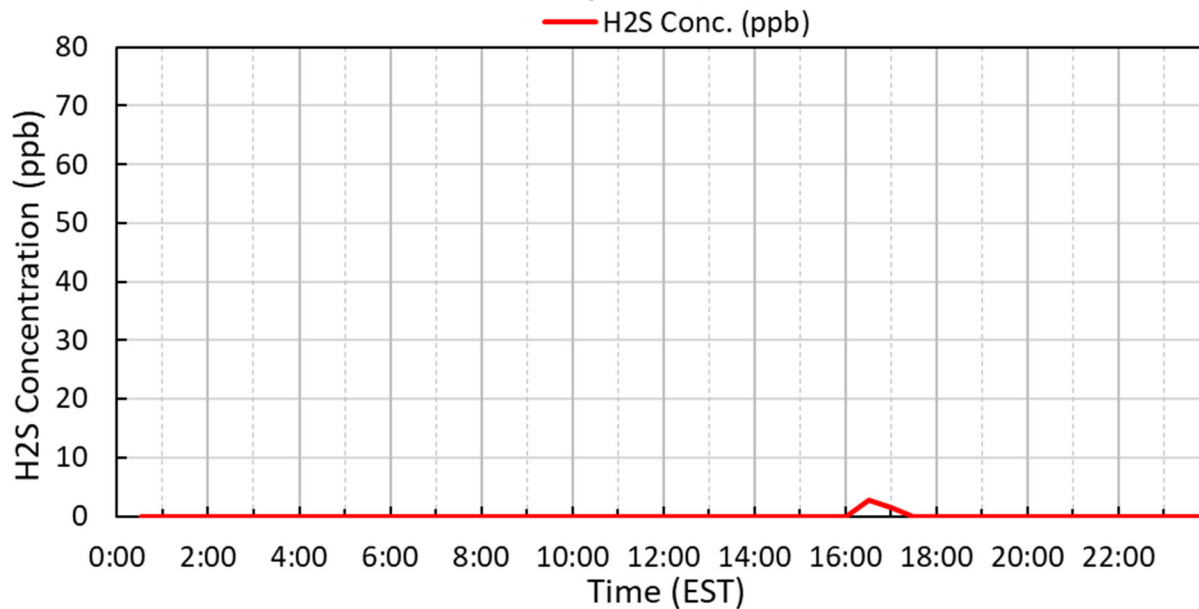
The five stand-alone H₂S monitoring stations correlate with five previous EPA's Viper monitoring system which includes areas to the north-northeast and south-southwest of the New-Indy Catawba Mill.

Winds were from the northeast during the morning hours, then shifted to the south to southwest. Wind speeds were 1 to 5 mph.

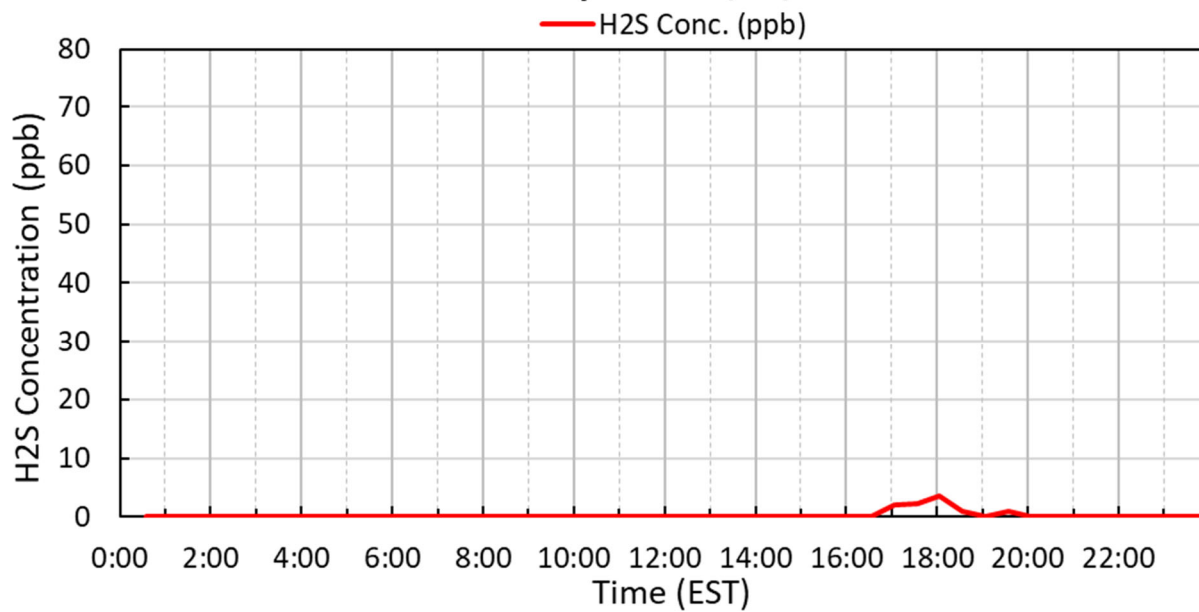
See wind rose diagram with aerial map figure for full wind data during this reporting period.



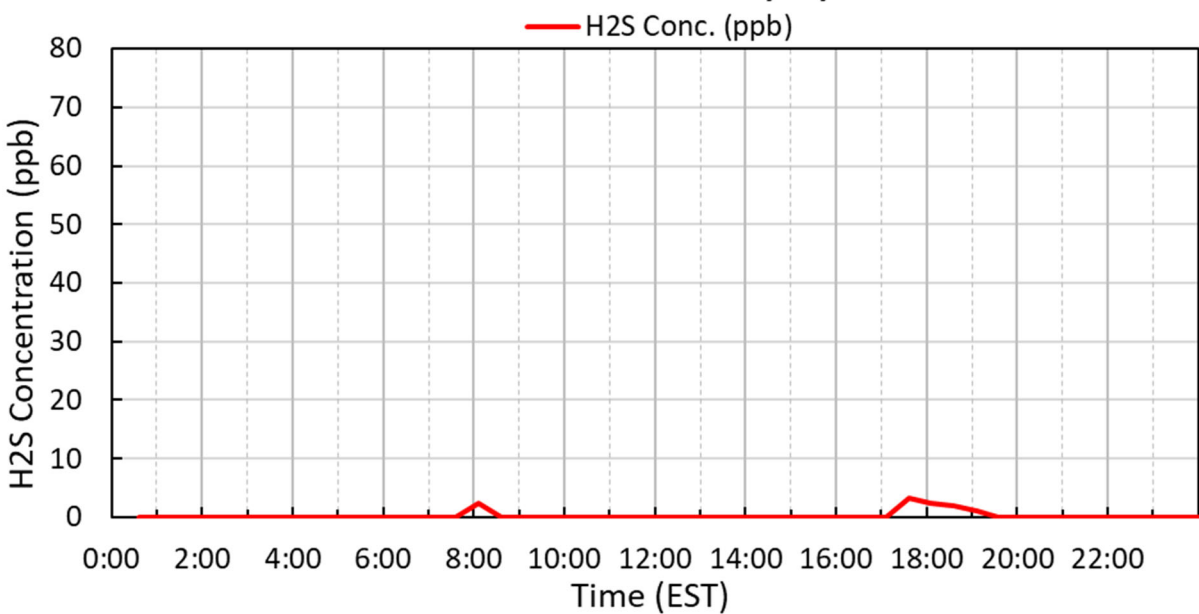
Treetops - 10/19/2021



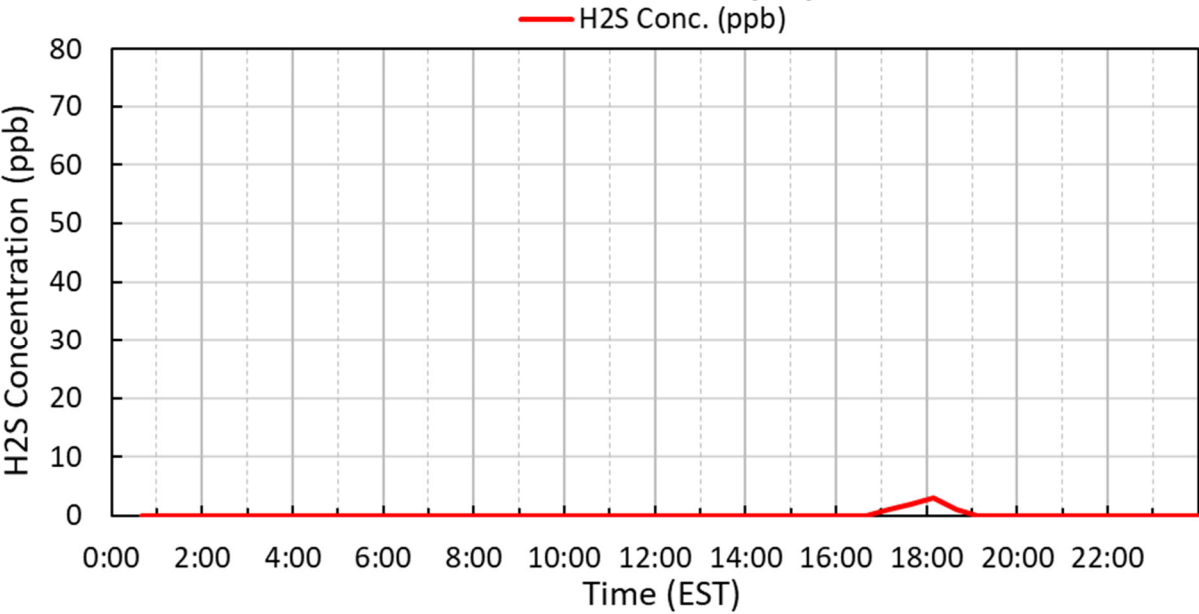
Liberty Hill - 10/19/2021



Riverchase Estates - 10/19/2021



Millstone Creek - 10/19/2021



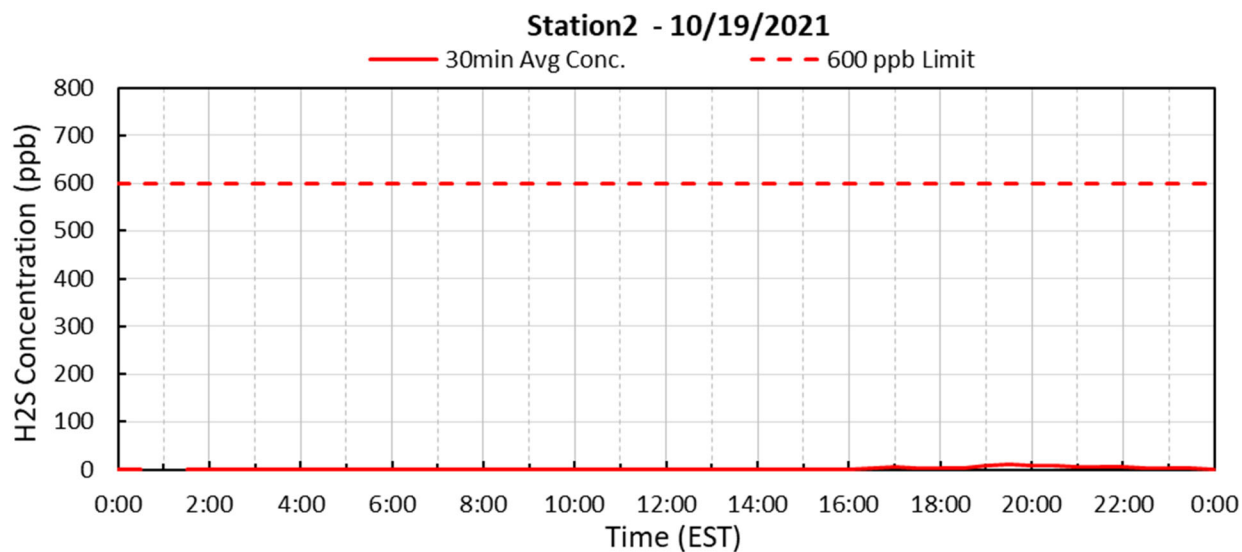
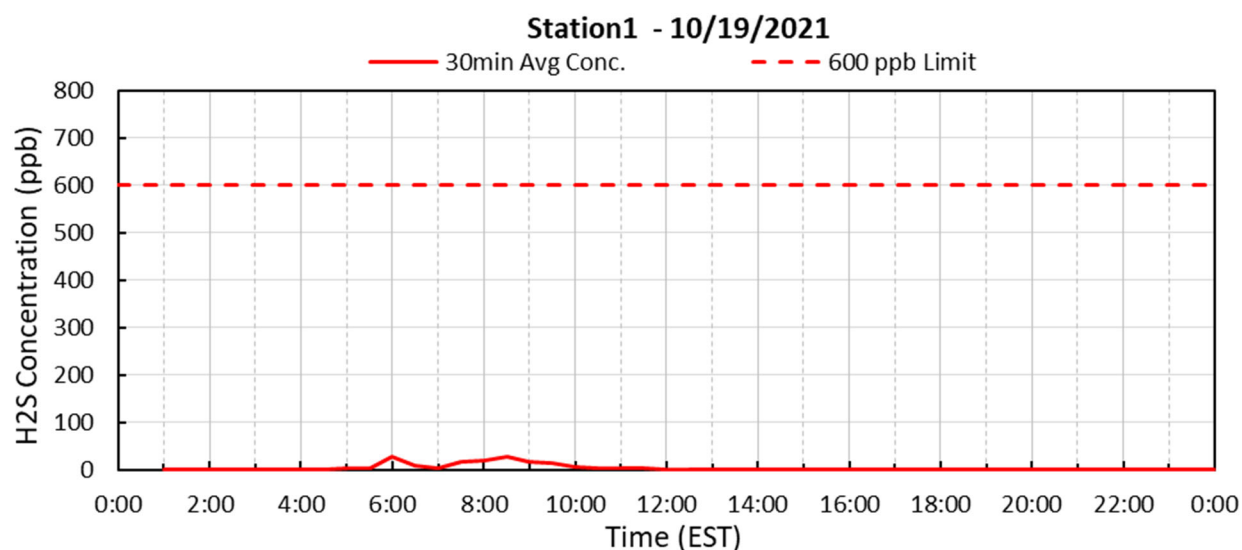
Period H₂S Monitoring Hydrogen Sulfide Onsite Monitors

Below are graphs for onsite locations during the current reporting period.

Depending on wind direction, the H₂S measured at the onsite fence line locations may not exit mill property at reported concentrations. Wind directions from offsite locations, blowing onto mill property, will disperse ambient concentrations to lower levels prior to exiting the plant site.

Winds were from the northeast during the morning hours, then shifted to the south to southwest. Wind speeds were 1 to 5 mph.

See wind rose diagram with aerial map figure for full wind data during this reporting period.



Station3 - 10/19/2021

