

There was an interruption in data collection for approx. 30 min at both Tom Stevens and Catawba Express.  
There is no indication of elevated H<sub>2</sub>S concentrations around the time of the interruption.  
If the unreported data is recoverable, this report will be reissued.

## Air Monitoring Summary Tables

This table summarizes monitoring data collected using DHEC monitors and EPA's Viper wireless remote monitoring system.

**Project Name:** H<sub>2</sub>S in South Carolina



**From:** 10/10/21  
12:00 AM

**To:** 10/10/21  
11:59 PM

Tom Stevens Rd							
Instrument	Analyte	ATSDR MRL Exceedance?	Number of Readings	Number of Detections	Concentration Range	Period Average	ATSDR MRL
SPM Flex 1	H <sub>2</sub> S	No	2938	0	0 - 0 ppb	0 ppb	70 ppb

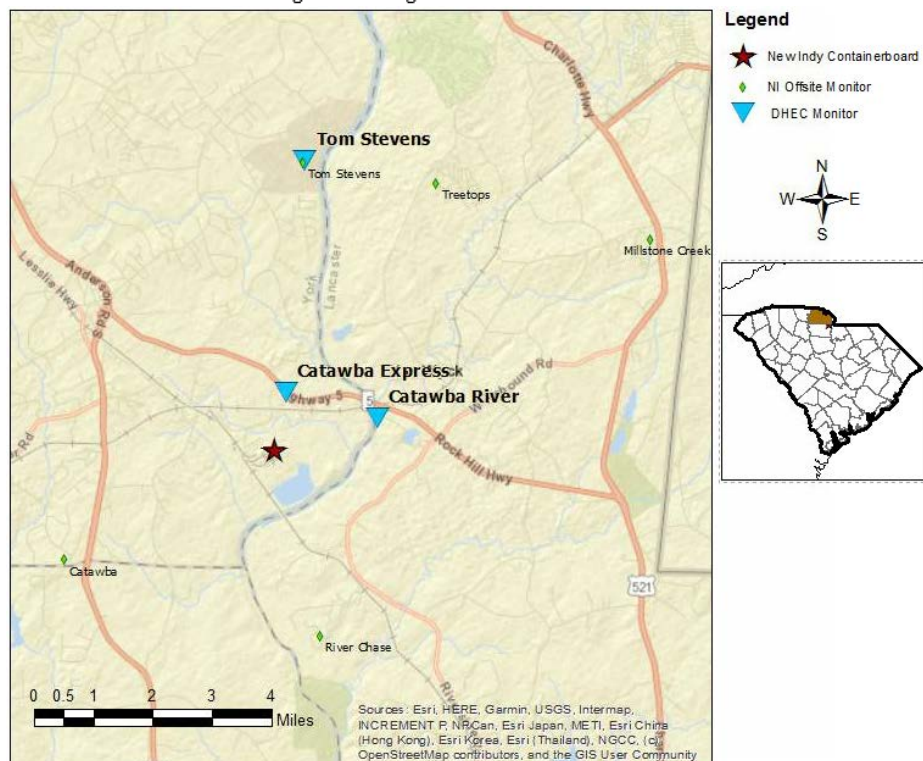
Catawba River							
Instrument	Analyte	ATSDR MRL Exceedance?	Number of Readings	Number of Detections	Concentration Range	Period Average	ATSDR MRL
SPM Flex 2	H <sub>2</sub> S	No	3000	0	0 - 0 ppb	0 ppb	70 ppb

Catawba Express							
Instrument	Analyte	ATSDR MRL Exceedance?	Number of Readings	Number of Detections	Concentration Range	Period Average	ATSDR MRL
SPM Flex 3	H <sub>2</sub> S	No	8850	0	0 - 0 ppb	0 ppb	70 ppb

### Notes:

Hydrogen sulfide concentrations presented in this data summary table are converted from parts per million, the instrument readout units, to parts per billion.

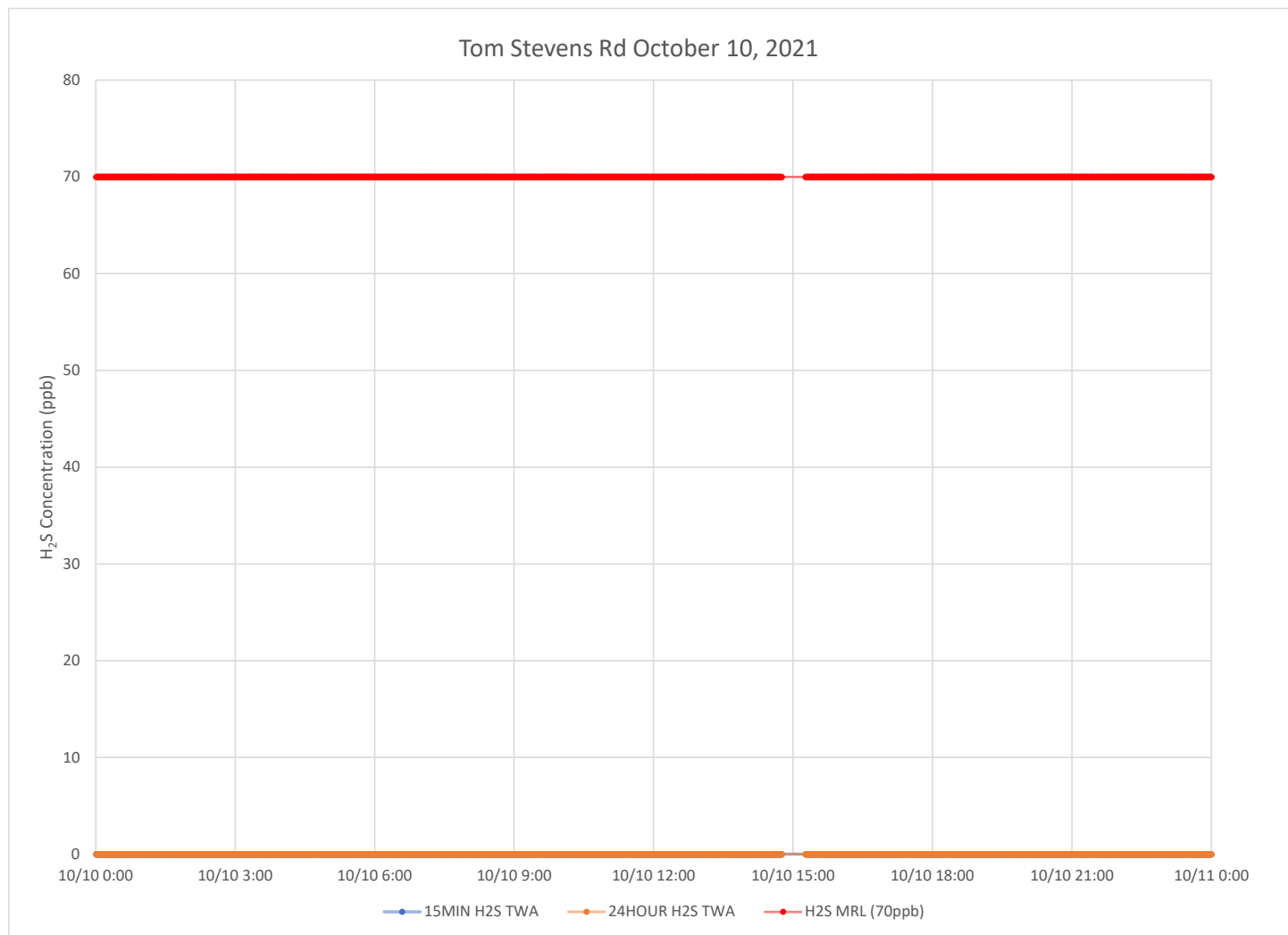
ATSDR MRL Agency for Toxic Substances and Disease Registry Minimal Risk Level - Acute Exposure (<14 days)  
H<sub>2</sub>S Hydrogen Sulfide  
hr Hour  
ppb Parts per billion  
MRL Exceedance Defines if the 24-hr TWA exceeded the MRL at any time during the period of this report  
SPM Single Point Monitor  
TWA Time Weighted Average



# H<sub>2</sub>S in South Carolina

## Hydrogen Sulfide 15-min and 24-hr Time Weighted Average Graphs

Winds were during this period ranged between from the north northeast to from the northeast.



### Notes:

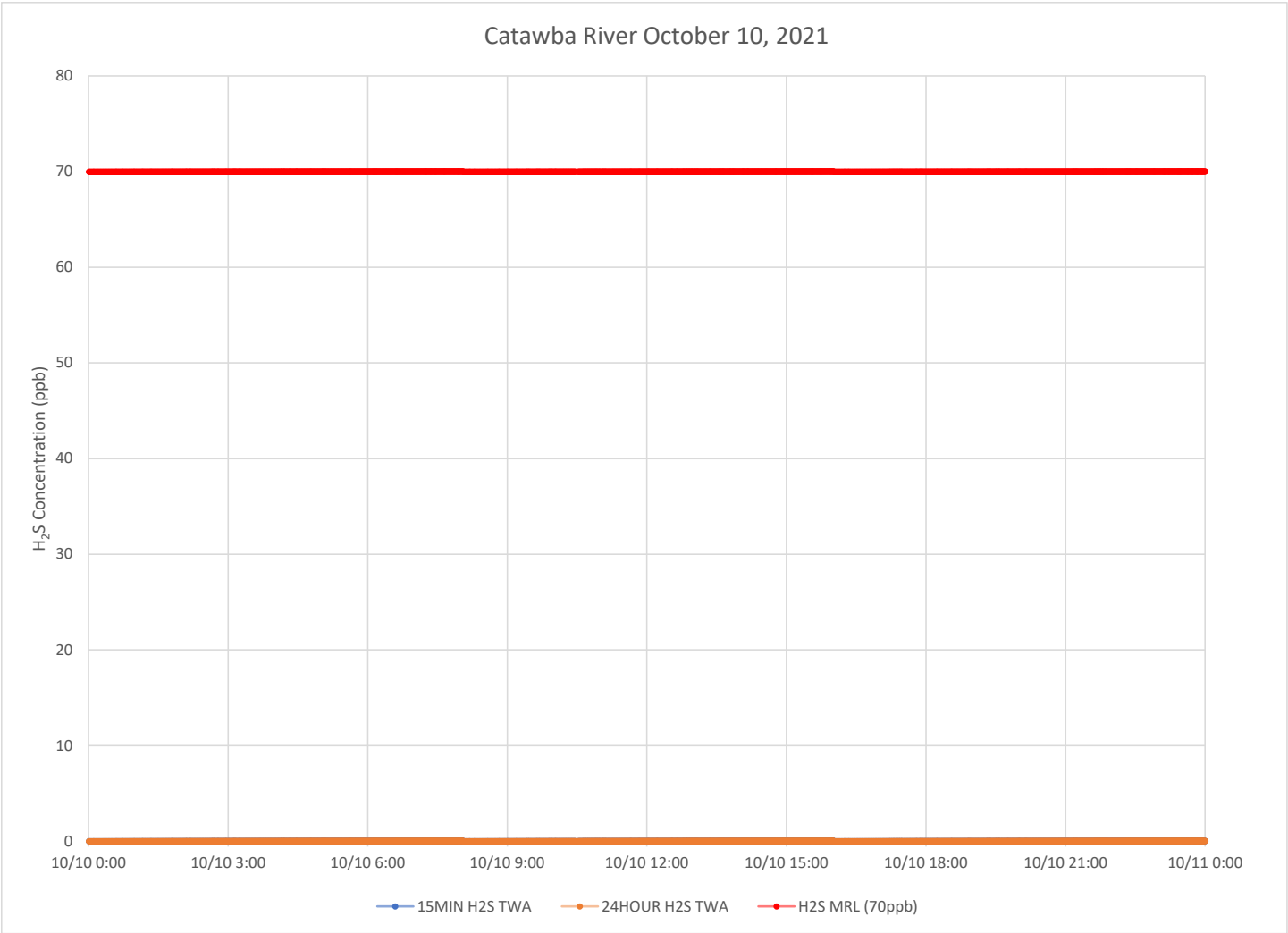
Time is Eastern Daylight Time

H<sub>2</sub>S – Hydrogen Sulfide

MIN – Minute

MRL – Minimal Risk Level

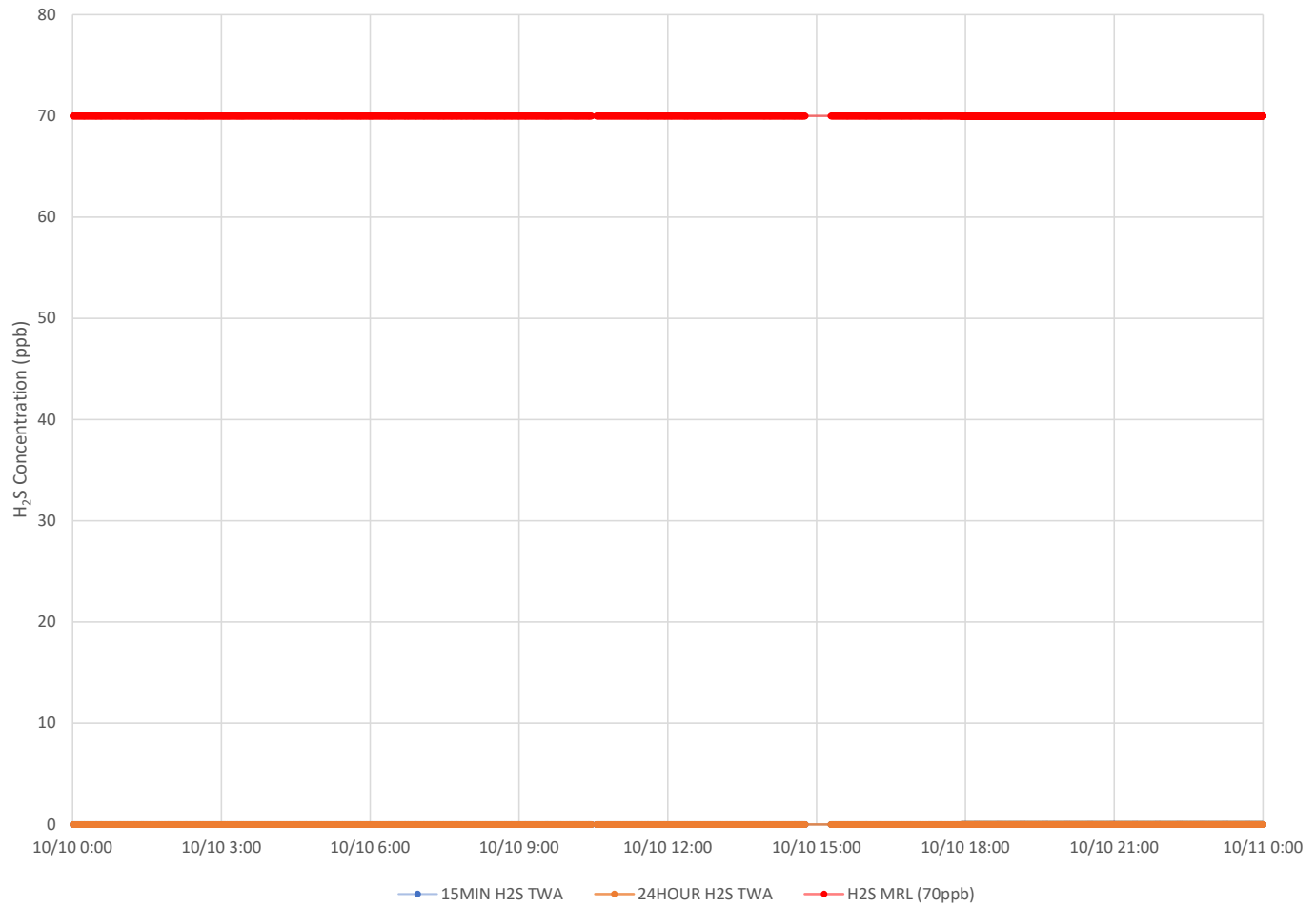
ppb – Parts per billion



Notes:

- Time is Eastern Daylight Time
- H<sub>2</sub>S – Hydrogen Sulfide
- MIN – Minute
- MRL – Minimal Risk Level
- ppb – Parts per billion

# Catawba Express October 10, 2021



## Notes:

Time is Eastern Daylight Time

H<sub>2</sub>S – Hydrogen Sulfide

MIN – Minute

MRL – Minimal Risk Level

ppb – Parts per billion