

Air Monitoring Summary Tables

The table below summarizes monitoring data collected using a portable wireless remote monitoring system.

All times in Eastern Standard Time (EST).

From: 09/14/21 12:00 am

To: 09/14/21

11:59 pm

Offsite Monitors

Instrument	Analyte	ATSDR MRL 14-day Avg Reached?	Concentration Range Detected ^a	24-hr Average ^a	7-day Average	ATSDR 14-day MRL
Catawba Headstart						
Acrulog PPB	H ₂ S	No	0 – 2 ppb	0.06 ppb	0.13 ppb	70 ppb
Treetops						
Acrulog PPB	H ₂ S	No	0 – 3 ppb	0.09 ppb	0.07 ppb	70 ppb
Liberty Hill						
Acrulog PPB	H ₂ S	No	0 – 7 ppb	0.73 ppb	0.66 ppb	70 ppb
Riverchase Estates						
Acrulog PPB	H ₂ S	No	0 – 1 ppb	0.04 ppb	0.15 ppb	70 ppb
Millstone Creek						
Acrulog PPB	H ₂ S	No	0 – 0 ppb	0.00 ppb	0.03 ppb	70 ppb

^a Based on 30-minute averages.

Onsite Fenceline Monitors

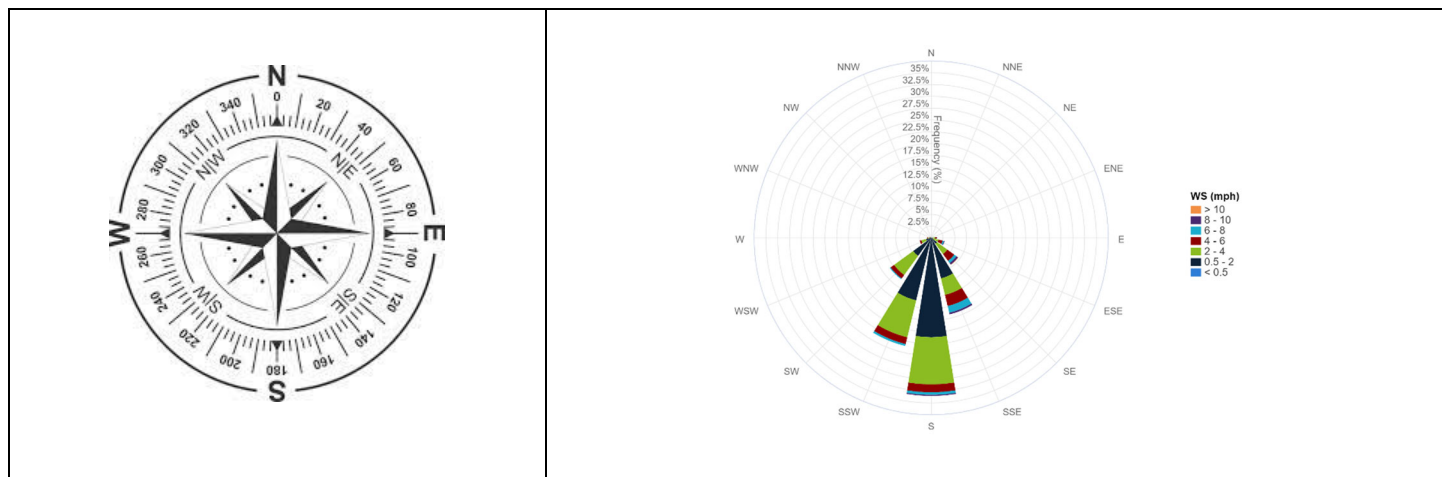
Instrument	Analyte	30-min AEGL Reached?	Concentration Range Detected ^b	24-hr Average ^b	7-day Average	30-min AEGL
Station 1						
TAPI Analyzer	H ₂ S	No	1 – 2 ppb	1.35 ppb	10.94 ppb	600 ppb
Station 2						
TAPI Analyzer	H ₂ S	No	0 – 5 ppb	0.90 ppb	1.13 ppb	600 ppb
Station 3						
TAPI Analyzer	H ₂ S	No	0 – 16 ppb	1.61 ppb	2.41 ppb	600 ppb

^b Based on 30-minute averages.

Notes:

ATSDR MRL Agency for Toxic Substances and Disease Registry Minimal Risk Level (MRL)
 AEGL EPA Acute Exposure Guidelines Levels
 H₂S Hydrogen Sulfide
 TAPI Teledyne API H₂S Analyzer
 hr Hour
 min Minute
 ppb Parts per billion
 MRL Limit Limit defined as a 14-day average value.

Wind rose – Shows the direction the wind is coming from, the monitoring station being at the center of the rose.





Legend



Offsite Fixed Monitoring Locations



Onsite Fixed Monitoring Locations



New-Indy Catawba

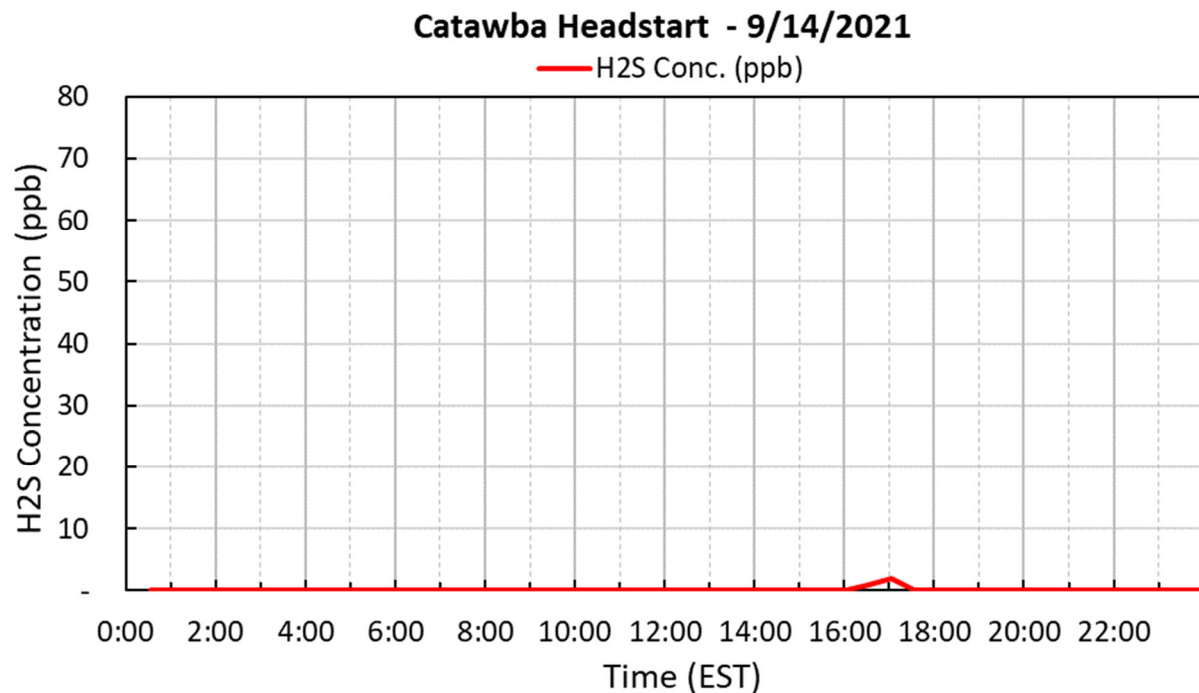
Period H₂S Monitoring Hydrogen Sulfide Offsite Monitors

Below are graphs for offsite locations where hydrogen sulfide (H₂S) was detected during the current reporting period.

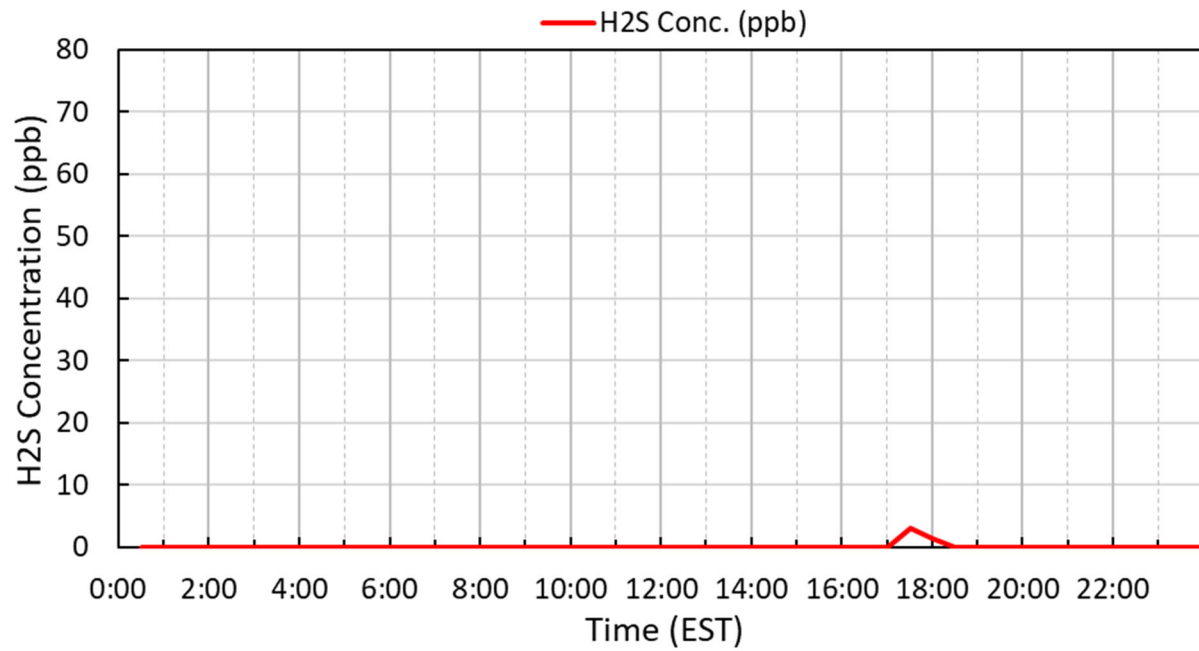
The five stand-alone H₂S monitoring stations correlate with five previous EPA's Viper monitoring system which includes areas to the north-northeast and south-southwest of the New-Indy Catawba Mill.

Winds came from the southwest to south throughout the day from 1 to 5 miles per hour.

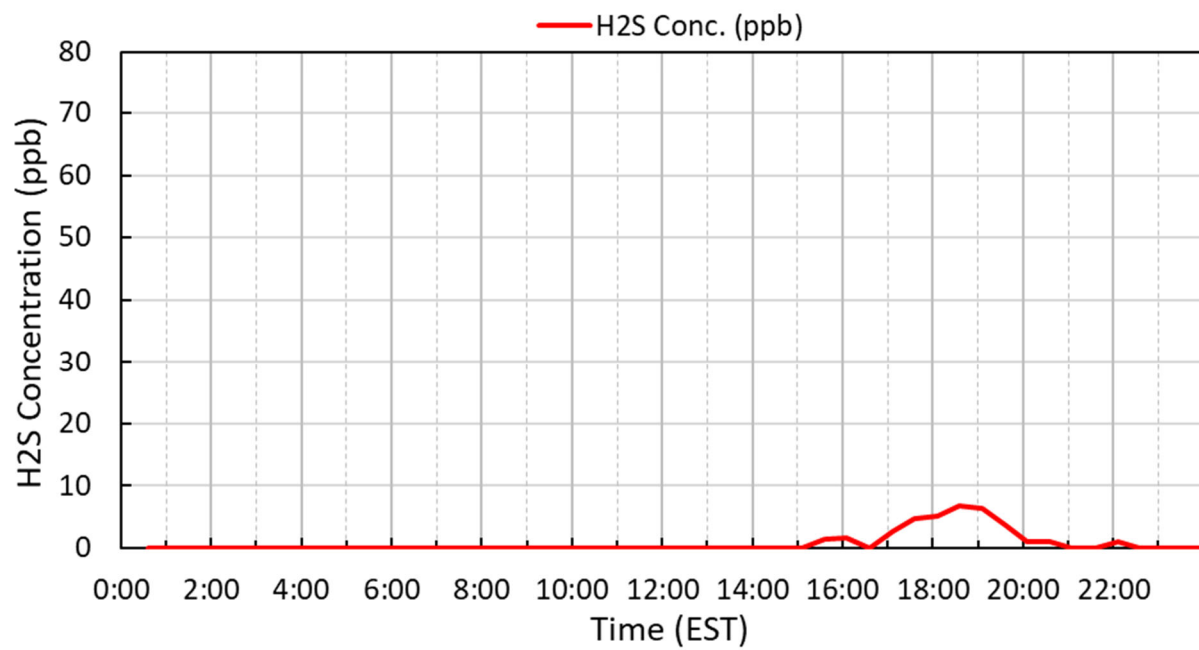
See wind rose diagram with aerial map figure for full wind data during this reporting period.



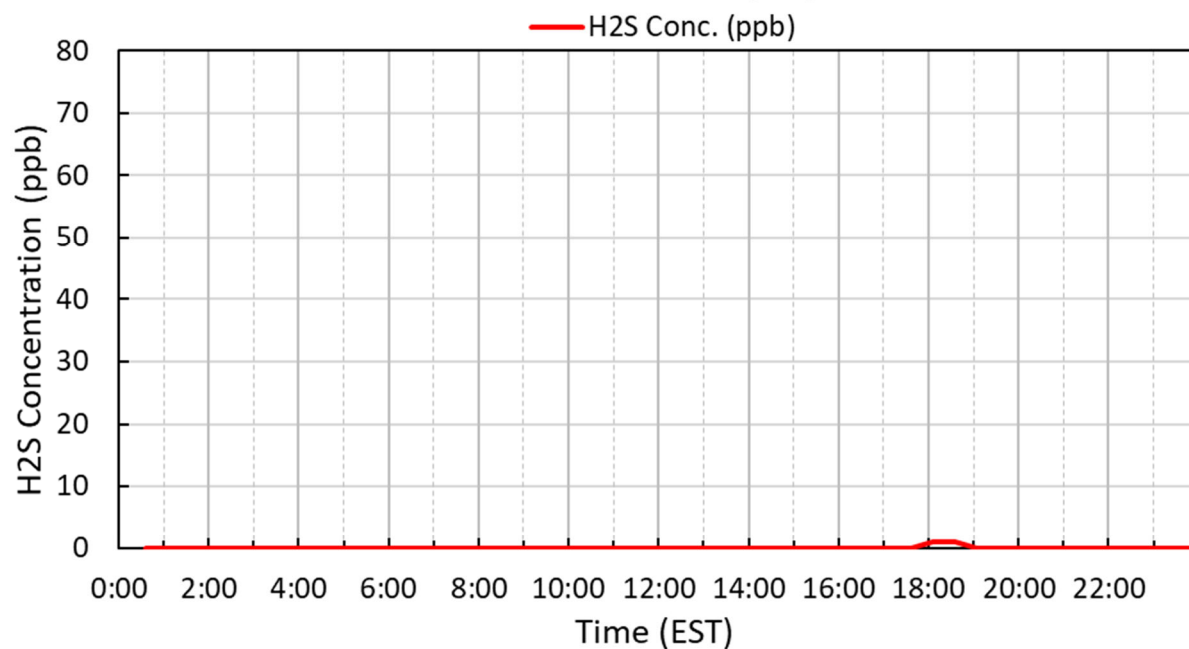
Treetops - 9/14/2021



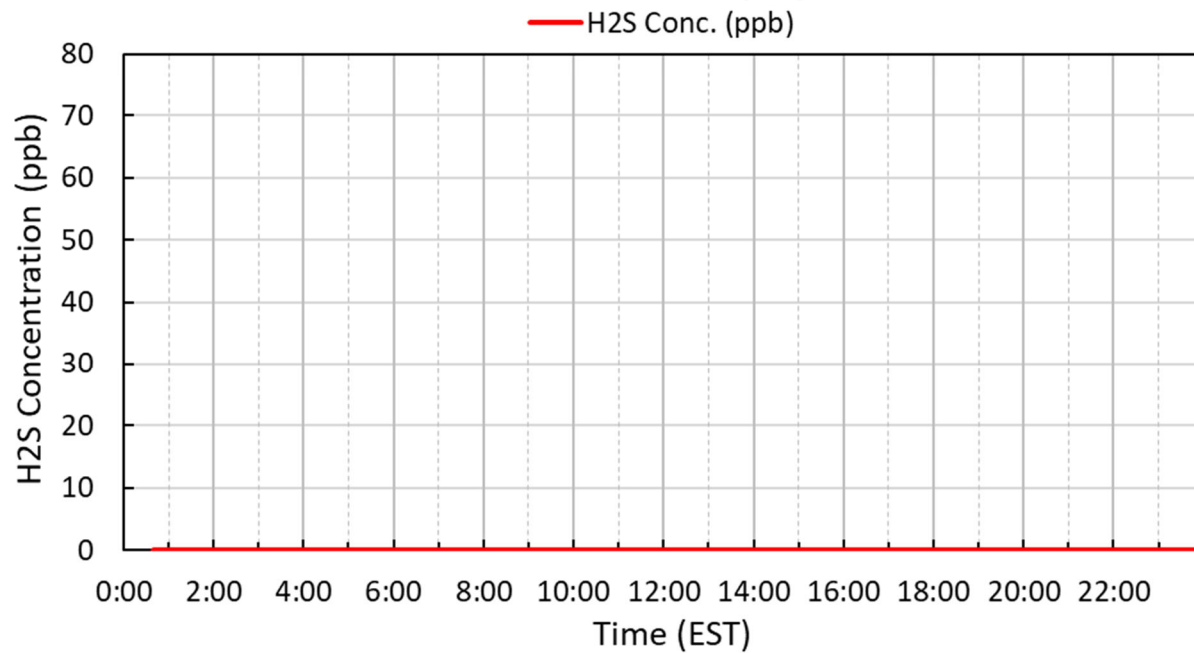
Liberty Hill - 9/14/2021



Riverchase Estates - 9/14/2021



Millstone Creek - 9/14/2021



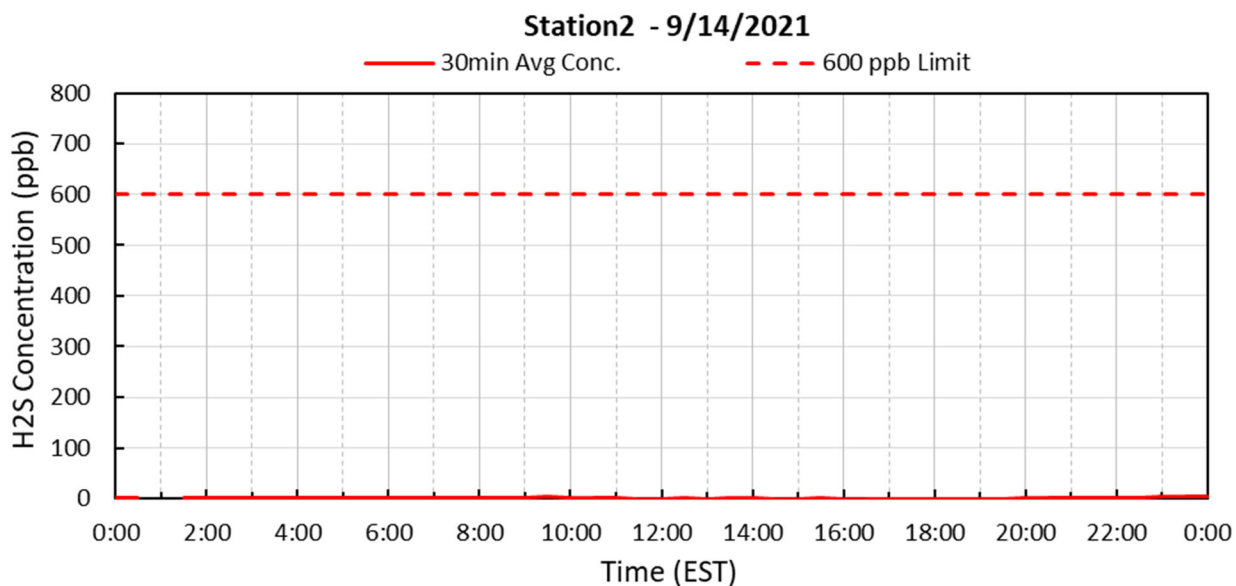
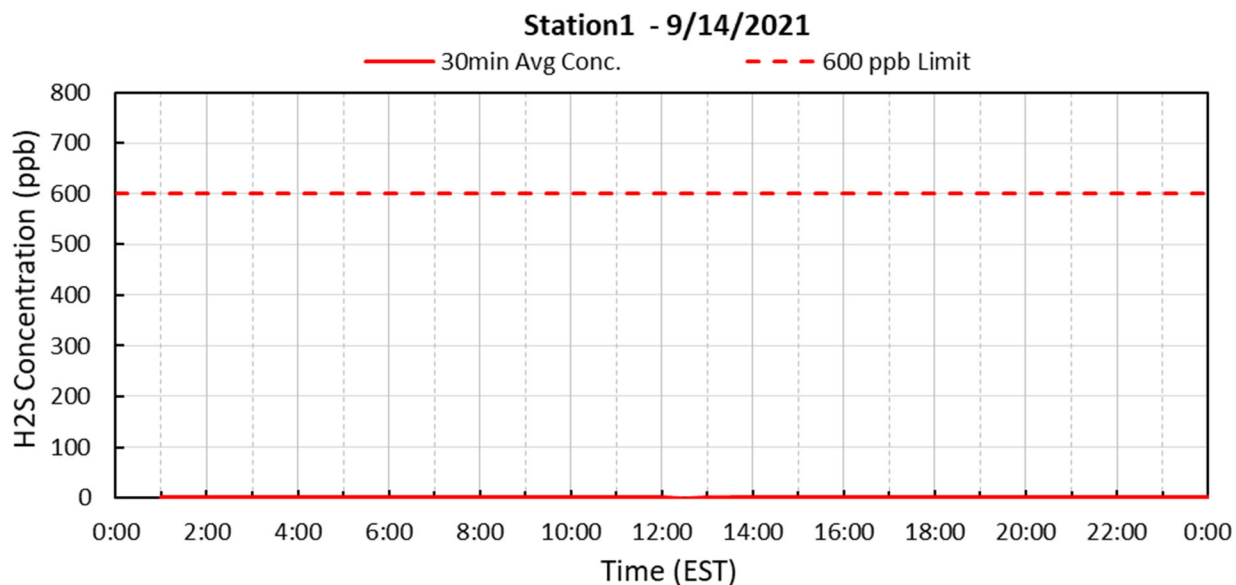
Period H₂S Monitoring Hydrogen Sulfide Onsite Monitors

Below are graphs for onsite locations during the current reporting period.

Depending on wind direction, the H₂S measured at the onsite fence line locations may not exit mill property at reported concentrations. Wind directions from offsite locations, blowing onto mill property, will disperse ambient concentrations to lower levels prior to exiting the plant site.

Winds came from the southwest to south throughout the day from 1 to 5 miles per hour.

See wind rose diagram with aerial map figure for full wind data during this reporting period.



Station3 - 9/14/2021

